

WAAS CH <b>99501</b> <b>W16A</b>	APP CRS <b>159°</b>	Rwy Idg TDZE Apt Elev	<b>5003</b> <b>1278</b> <b>1278</b>
--	------------------------	-----------------------------	---

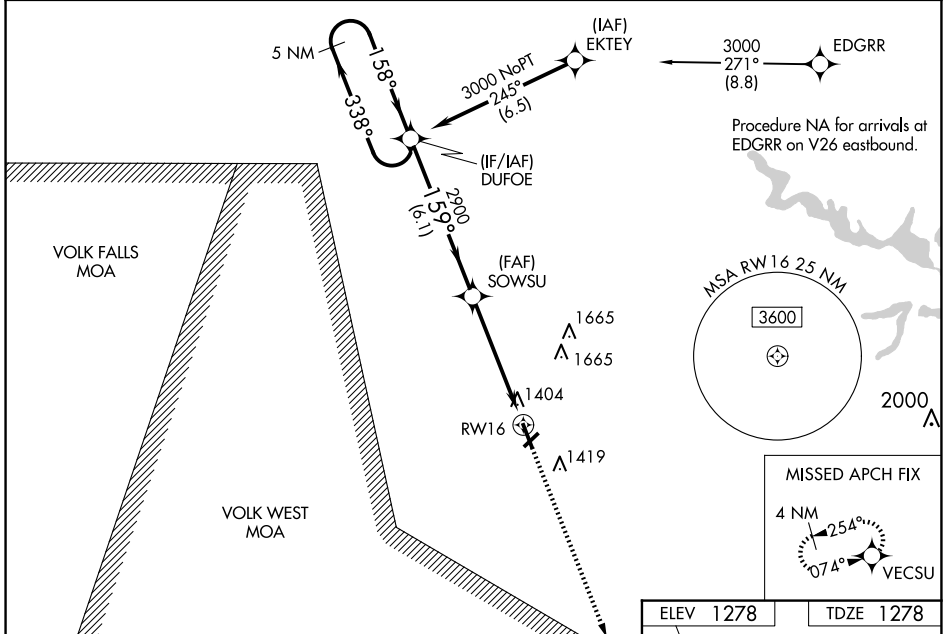
# RNAV (GPS) RWY 16

MARSHFIELD MUNI (MFI)

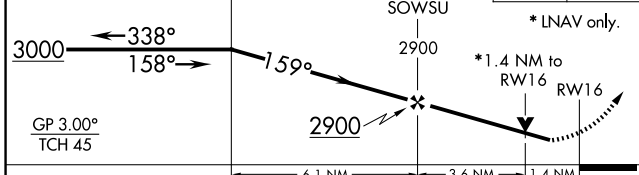
**⚠** For uncompensated Baro-VNAV systems, LNAV/VNAV NA below -21°C (-5°F) or above 54°C (130°F). Baro-VNAV and VDP NA when using Central Wisconsin altimeter setting. DME/DME RNP-0.3 NA. Rwy 16 helicopter visibility reduction below 3/4 SM NA. When local altimeter setting not received, use Central Wisconsin altimeter setting and increase all DA 56 feet and all visibility 1/8 SM, increase all MDA 60 feet and LNAV Cat C/D visibility 1/4 SM.

**MISSED APPROACH:**  
Climb to 3000 direct VECSU and hold.

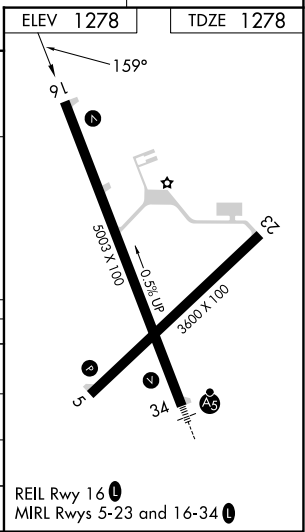
ASOS <b>121.575</b>	MINNEAPOLIS CENTER <b>124.4 317.7</b>	UNICOM <b>123.0 (CTAF)</b>
------------------------	--	-------------------------------



5 NM Holding Pattern  
VGSI and RNAV glidepath not coincident (VGSI Angle 3.00/TCH 33).  
DUFOE  
SOWSU  
3000 VECSU  
\* LNAV only.



CATEGORY	A	B	C	D
LPV DA		1639-1¼	361 (400-1¼)	
LNAV/VNAV DA		1682-1¾	404 (500-1¾)	
LNAV MDA	1760-1	482 (500-1)	1760-1¾	482 (500-1¾)
<b>C</b> CIRCLING	1760-1	482 (500-1)	2020-2¼ 742 (800-2¼)	2020-2½ 742 (800-2½)



EC-3, 15 MAY 2025 to 12 JUN 2025

EC-3, 15 MAY 2025 to 12 JUN 2025