

APP CRS	Rwy Ldg	N/A
180°	TDZE	N/A
	Apt Elev	329

RNAV (GPS)-A
BRUNSWICK COUNTY (LVL)

RNP APCH.

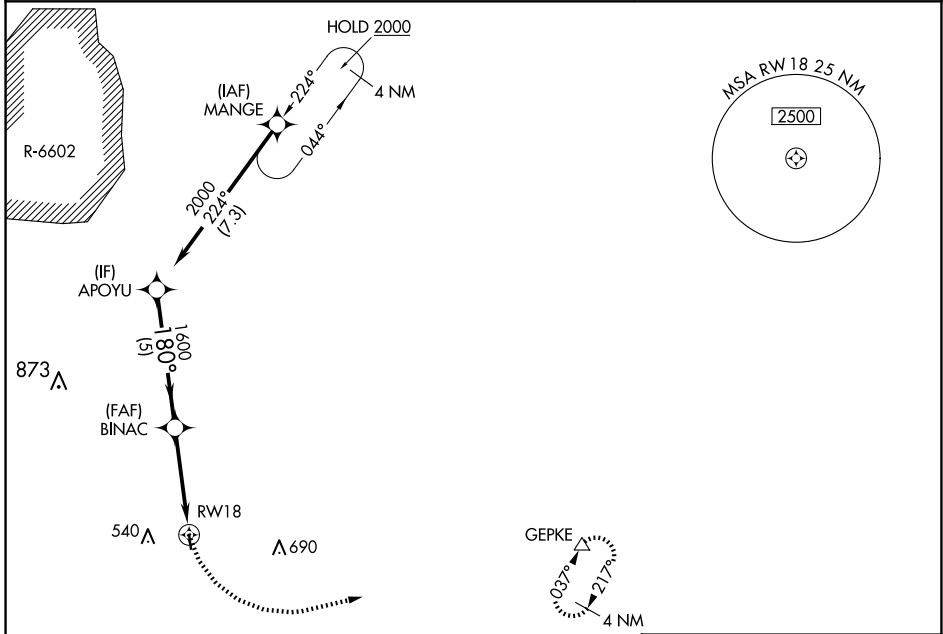
Procedure NA at night. Helicopter visibility reduction below 1 SM NA. When local altimeter setting not received, use South Hill altimeter setting and increase all MDA 60 feet.

MISSED APPROACH: Climbing left turn to 4000 direct GEPKE and hold, continue climb-in-hold to 4000.

AWOS-3
119.625

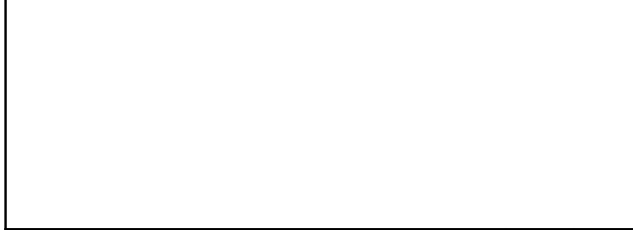
WASHINGTON CENTER
118.75 377.1

UNICOM
122.8 (CTAF)



NE-3, 15 MAY 2025 to 12 JUN 2025

NE-3, 15 MAY 2025 to 12 JUN 2025



ELEV 329	180°	81
		3070 X 50
		0.65% UP
		36

APOYU	Visual Segment - Obstacles.	4000	GEPKE
2000			△
	BINAC		
	1600		
		RW18	
	5 NM	3.9 NM	

CATEGORY	A	B	C	D
CIRCLING	1340-3	1011 (1100-3)	NA	