

EXECUTIVE ONE DEPARTURE (RNAV)

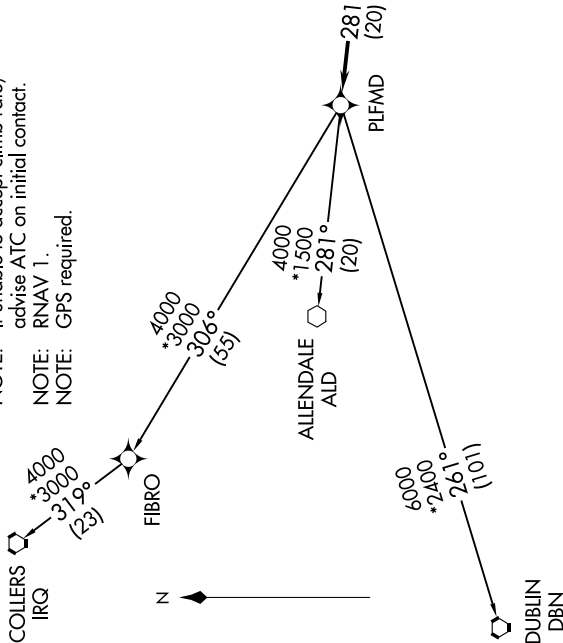
SE-2, 15 MAY 2025 to 12 JUN 2025

AWOS-3
123.775
CLNC DEL
119.85
CTAF
122.8
CHARLESTON DEP CON
120.7 306.925

TAKEOFF MINIMUMS

- Rwy 4: ATC climb of 500' per NM to 900.
- Rwy 9: ATC climb of 500' per NM to 800.
- Rwy 22: Standard with minimum climb of 245' per NM to 520. ATC climb of 500' per NM to 1300.
- Rwy 27: ATC climb of 500' per NM to 1500.

- NOTE: Transponder code will be issued by Charleston clearance delivery.
- NOTE: If unable to accept climb rate, advise ATC on initial contact.
- NOTE: RNAV 1.
- NOTE: GPS required.



NOTE: Chart not to scale.

DEPARTURE ROUTE DESCRIPTION

TAKEOFF RUNWAY 4: Climb heading 037° to 520 MSL, then left turn direct RNDDAH, cross RNDDAH at or above 2000, direct GECHGE and then on depicted route to PLFMD, thence. . . .

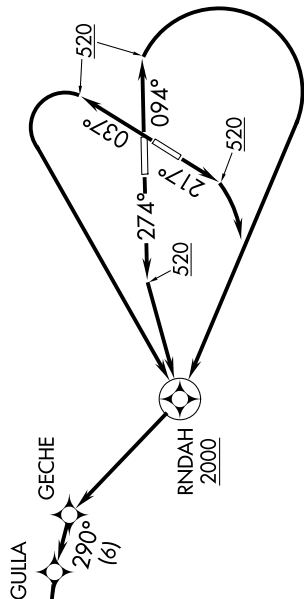
TAKEOFF RUNWAY 9: Climb heading 094° to 520 MSL, then right turn direct RNDDAH, cross RNDDAH at or above 2000, direct GECHGE and then on depicted route to PLFMD, thence. . . .

TAKEOFF RUNWAY 22: Climb heading 217° to 520 MSL, then right turn direct RNDDAH, cross RNDDAH at or above 2000, direct GECHGE and then on depicted route to PLFMD, thence. . . .

TAKEOFF RUNWAY 27: Climb heading 274° to 520 MSL, then direct RNDDAH, cross RNDDAH at or above 2000, direct GECHGE and then on depicted route to PLFMD, thence. . . .

. . . via assigned transition, maintain 2000. Expect clearance to filed altitude/flight level within ten (10) minutes after departure.

- ALLENDALE TRANSITION (EXTVE1.ALD)
- COLLIERS TRANSITION (EXTVE1.IRQ)
- DUBLIN TRANSITION (EXTVE1.DBN)



EXECUTIVE ONE DEPARTURE (RNAV)

SE-2, 15 MAY 2025 to 12 JUN 2025