

VOR/DME LVM <b>116.1</b> Chan <b>108</b>	APP CRS <b>145°</b>	Rwy Idg TDZE Apt Elev <b>4659</b>	<b>N/A</b> <b>N/A</b>
--	------------------------	--	--------------------------

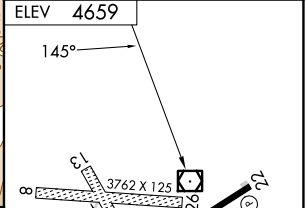
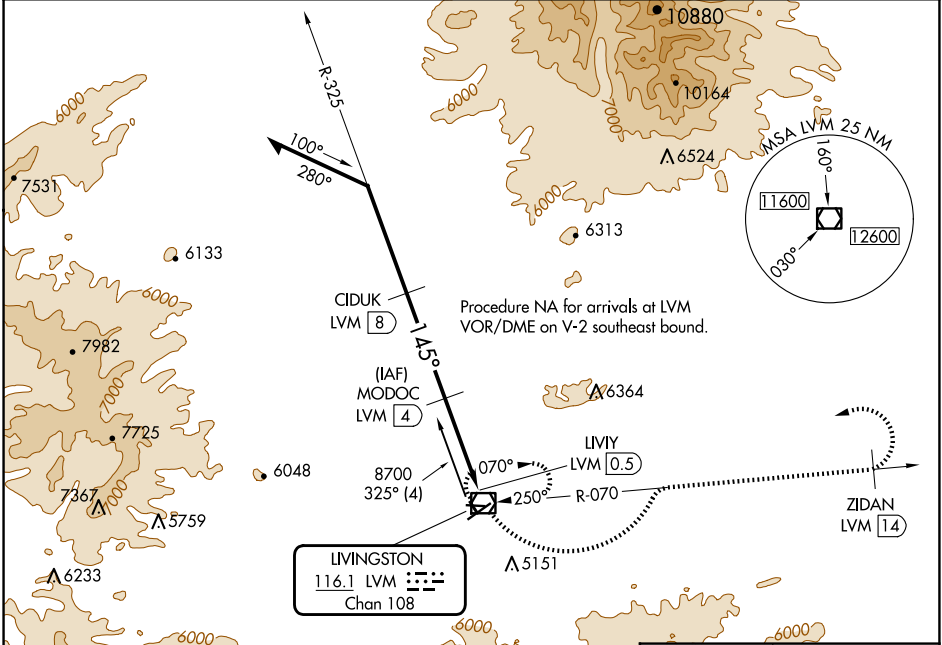
# VOR/DME-B

MISSION FLD (LVM)

**⚠** Circling NA for Cats C southeast of Rwy 4-22.  
**⚠** Circling NA to Rwy 8-26 and 13-31.  
**⚠** -29°C

**MISSED APPROACH:** Climbing left turn to 9900 via LVM VOR/DME R-070 to ZIDAN/14 DME and left turn direct LVM VOR/DME and hold.

ASOS <b>135.275</b>	BIG SKY APP CON ★ <b>119.55 235.775</b>	UNICOM <b>123.0 (CTAF)</b>
------------------------	--	-------------------------------



Remain within 12 NM	MODOC LVM 4	9900 LVM R-070	ZIDAN LVM 14	LVM
---------------------	-------------	----------------	--------------	-----

8700	7400	6300	LIVY LVM 0.5
4 NM	3.5 NM		

CATEGORY	A	B	C	D
CIRCLING	5540-1¼	881 (900-1¼)	5540-2¾ 881 (900-2¾)	NA

REIL Rwy 22	MIRL Rwy 4-22
-------------	---------------

NW-1, 15 MAY 2025 to 12 JUN 2025

NW-1, 15 MAY 2025 to 12 JUN 2025