

VOR/DME DJB <b>113.6</b> Chan <b>83</b>	APP CRS <b>125°</b>	Rwy Idg TDZE Apt Elev	<b>N/A</b> <b>N/A</b> <b>758</b>
---	------------------------	-----------------------------	--

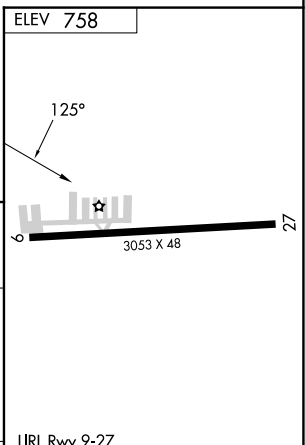
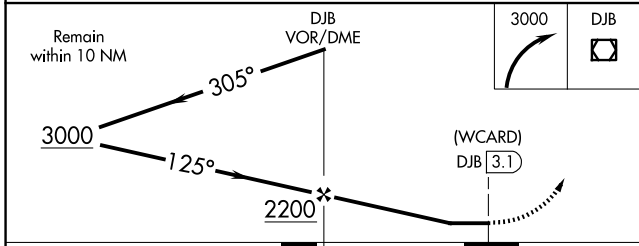
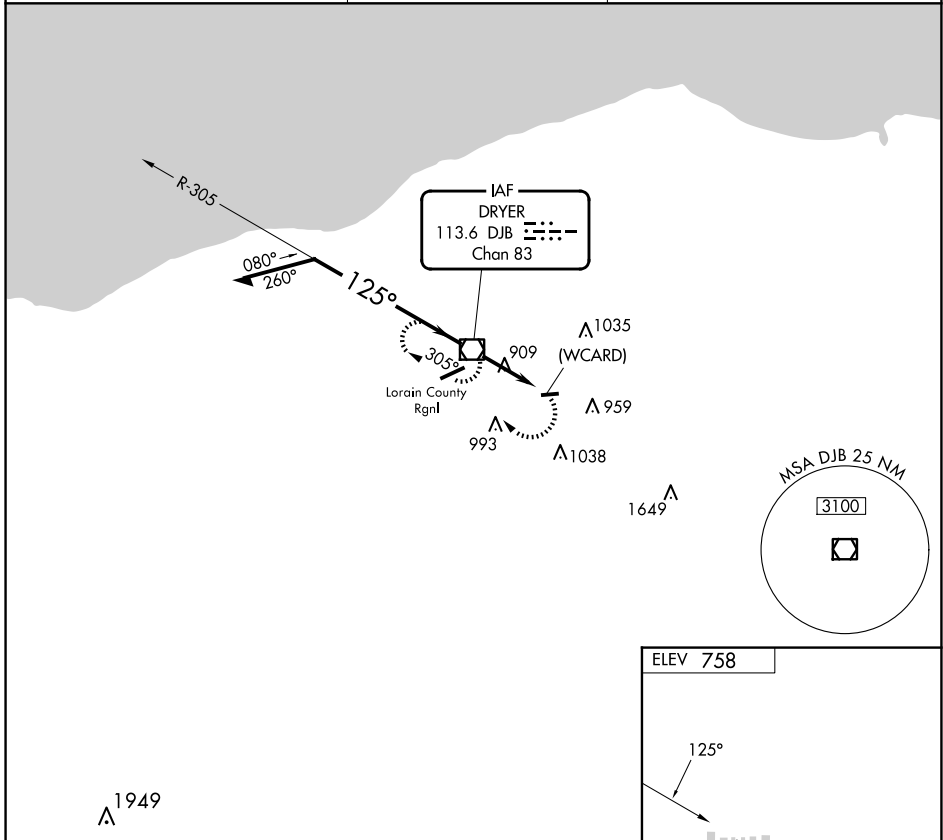
# VOR or GPS-A

ELYRIA (1G1)

**▼** Use Cleveland Hopkins Intl altimeter setting.  
**▲ NA** Procedure NA at night.  
 Helicopter visibility reduction below 1 SM NA.

MISSED APPROACH: Climbing right turn to 3000 direct DJB VOR/DME and hold.

CLEVELAND APP CON <b>125.35 346.325</b>	CLNC DEL <b>125.7</b>	UNICOM <b>122.8 (CTAF)</b>
--	--------------------------	-------------------------------



CATEGORY	FAF to MAP 3.1 NM					
	A	B	C	D		
CIRCLING	1280-1 522 (600-1)	1320-1 562 (600-1)	1420-1¾ 662 (700-1¾)	NA		
	Knots	60	90	120	150	180
	Min:Sec	3:06	2:04	1:33	1:14	1:02

EC-2, 15 MAY 2025 to 12 JUN 2025

EC-2, 15 MAY 2025 to 12 JUN 2025