

HIICH TWO DEPARTURE (RNAV)

AL-5326

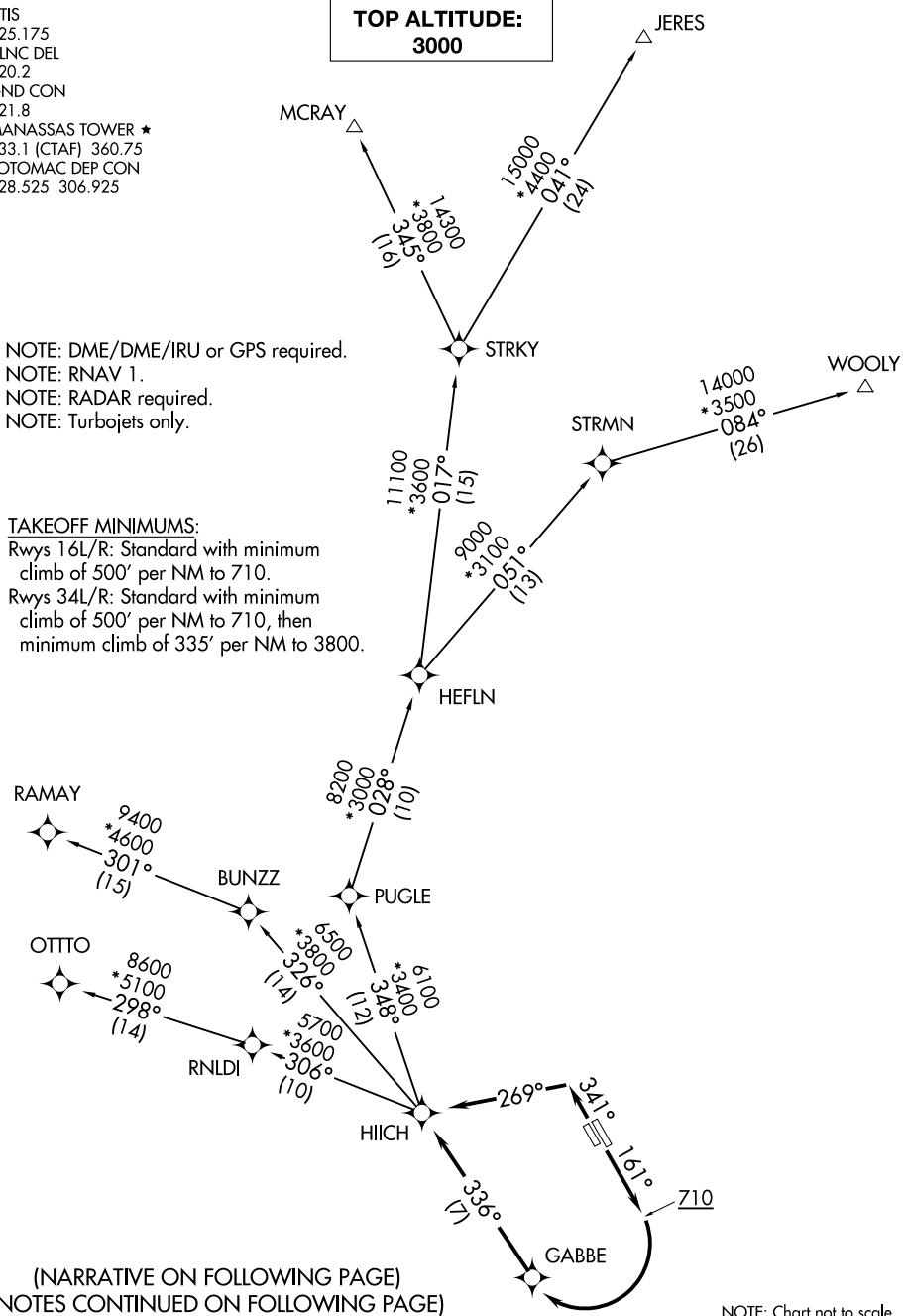
ATIS
125.175
CLNC DEL
120.2
GND CON
121.8
MANASSAS TOWER ★
133.1 (CTAF) 360.75
POTOMAC DEP CON
128.525 306.925

**TOP ALTITUDE:
3000**

NOTE: DME/DME/IRU or GPS required.
NOTE: RNAV 1.
NOTE: RADAR required.
NOTE: Turbojets only.

TAKEOFF MINIMUMS:

Rwys 16L/R: Standard with minimum climb of 500' per NM to 710.
Rwys 34L/R: Standard with minimum climb of 500' per NM to 710, then minimum climb of 335' per NM to 3800.



(NARRATIVE ON FOLLOWING PAGE)
(NOTES CONTINUED ON FOLLOWING PAGE)

NOTE: Chart not to scale.

NE-3, 15 MAY 2025 to 12 JUN 2025

NE-3, 15 MAY 2025 to 12 JUN 2025

HIICH TWO DEPARTURE (RNAV)