

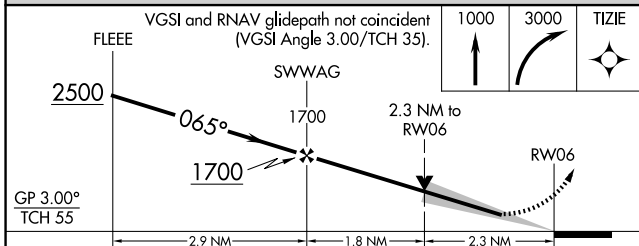
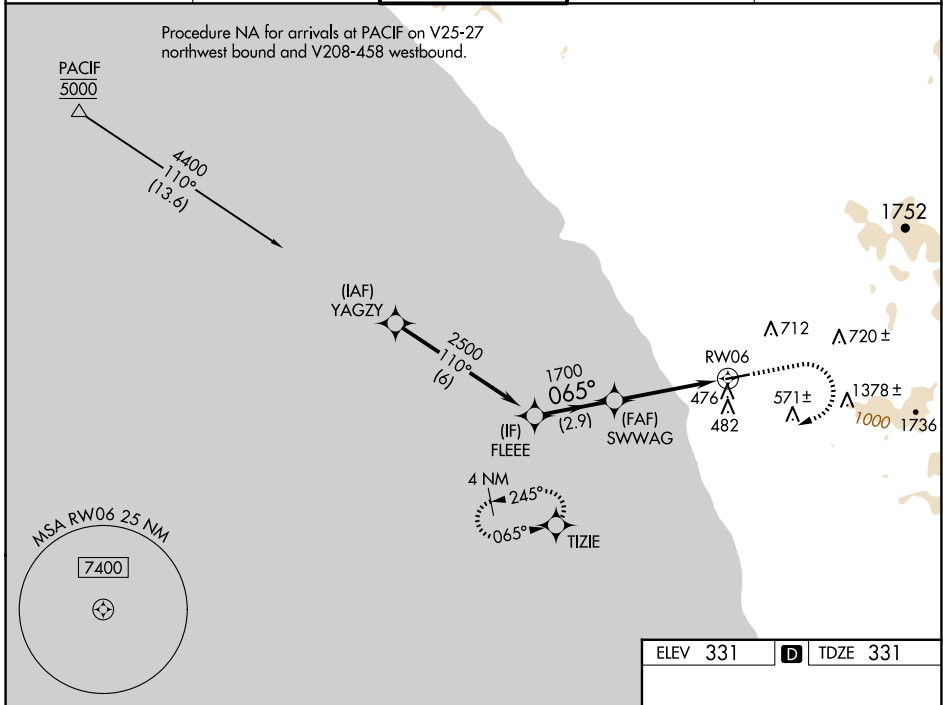
WAAS CH 40239 W06A	APP CRS 065°	Rwy Idg TDZE Apt Elev	4600 331 331
--	------------------------	-----------------------------	---

RNAV (GPS) Y RWY 6

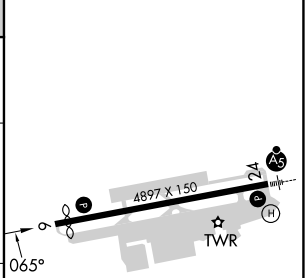
MC CLELLAN-PALOMAR (CRQ)

RNP APCH - GPS.	MISSED APPROACH: Climb to 1000 then climbing right turn to 3000 direct TIZIE and hold, continue climb-in-hold to 3000.
▼ For uncompensated Baro-VNAV systems, LNAV/VNAV ▲ NA below 5°C or above 54°C.	

ATIS 120.15	SOCAL APP CON 127.3 323.0	PALOMAR TOWER * 118.6 (CTAF) 0 276.4	GND CON 121.8	CLNC DEL 134.85
-----------------------	-------------------------------------	---	-------------------------	---------------------------



ELEV 331	D TDZE 331
----------	-------------------



CATEGORY	A	B	C	D
LPV DA		796-1 $\frac{3}{8}$	465 (500-1 $\frac{3}{8}$)	
LNAV/VNAV DA		837-1 $\frac{3}{8}$	506 (600-1 $\frac{3}{8}$)	
LNAV MDA	1100-1 769 (800-1)	1100-1 $\frac{1}{4}$ 769 (800-1 $\frac{1}{4}$)	1100-2 $\frac{1}{2}$	769 (800-2 $\frac{1}{2}$)
C CIRCLING	1100-1 769 (800-1)	1100-1 $\frac{1}{4}$ 769 (800-1 $\frac{1}{4}$)	1260-2 $\frac{3}{4}$ 929 (1000-2 $\frac{3}{4}$)	NA

HIRL Rwy 6-24 **D**

SW-3, 15 MAY 2025 to 12 JUN 2025

SW-3, 15 MAY 2025 to 12 JUN 2025