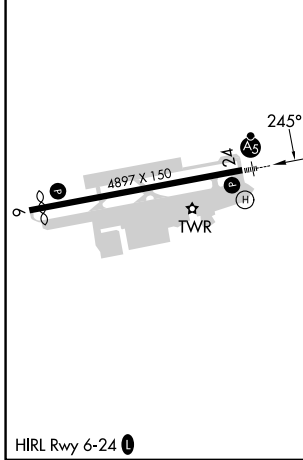
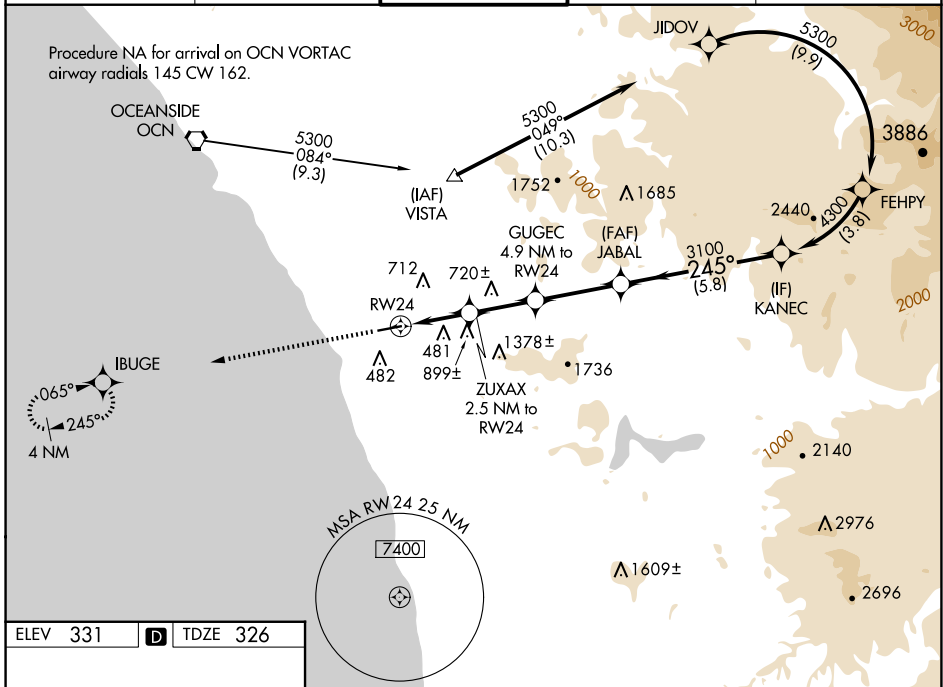


WAAS CH <b>45831</b> <b>W24B</b>	APP CRS <b>245°</b>	Rwy Idg TDZE <b>4897</b> <b>326</b> Apt Elev <b>331</b>
--	------------------------	---

# RNAV (GPS) X RWY 24

MC CLELLAN-PALOMAR (CRQ)

For uncompensated Baro-VNAV systems, LNAV/VNAV NA below -4°C (25°F) or above 54°C (130°F). DME/DME RNP-0.3 NA. RF required. Rwy 24 helicopter visibility reduction below RVR 4000 NA. For inop ALS, increase LNAV/VNAV all Cats visibility to 1 7/8 SM. Increase LNAV Cats A/B visibility to RVR 5500, Cat C to 1 7/8 SM. Inop table does not apply to LPV.	MALSR 	MISSED APPROACH: Climb to 2000 direct IBUGE and hold.		
	ATIS <b>120.15</b>	SOCAL APP CON <b>127.3 323.0</b>	<b>PALOMAR TOWER *</b> <b>118.6 (CTAF) 0 276.4</b>	GND CON <b>121.8</b>



ELEV 331	<b>D</b>	TDZE 326		
2000 IBUGE *LNAV only	ZUXAX 2.5 NM to RWY 24 *1.8 NM to RWY 24	GUGEC 4.9 NM to RWY 24	JABAL 3100	KANEC 4300 GP 3.20° TCH 54
1.8 NM	0.7	2.4 NM	3.1 NM	5.8 NM
CATEGORY LPV DA LNAV/VNAV DA LNAV MDA CIRCLING	A 528/40 927-1 1/2 1000/40 1000-1 669 (700-1)	B 202 (200-3/4) 601 (600-1 1/2) 674 (700-3/4) 1020-1 689 (700-1)	C 576/40 250 (300-3/4) 1000-1 1/2 674 (700-1 1/2) 1260-2 3/4 929 (1000-2 3/4)	D NA NA NA NA

SW-3, 15 MAY 2025 to 12 JUN 2025

SW-3, 15 MAY 2025 to 12 JUN 2025