

APP CRS	Rwy Idg	4897
245°	TDZE	326
	Apt Elev	331

RNAV (RNP) Z RWY 24

MC CLELLAN-PALOMAR (CRQ)

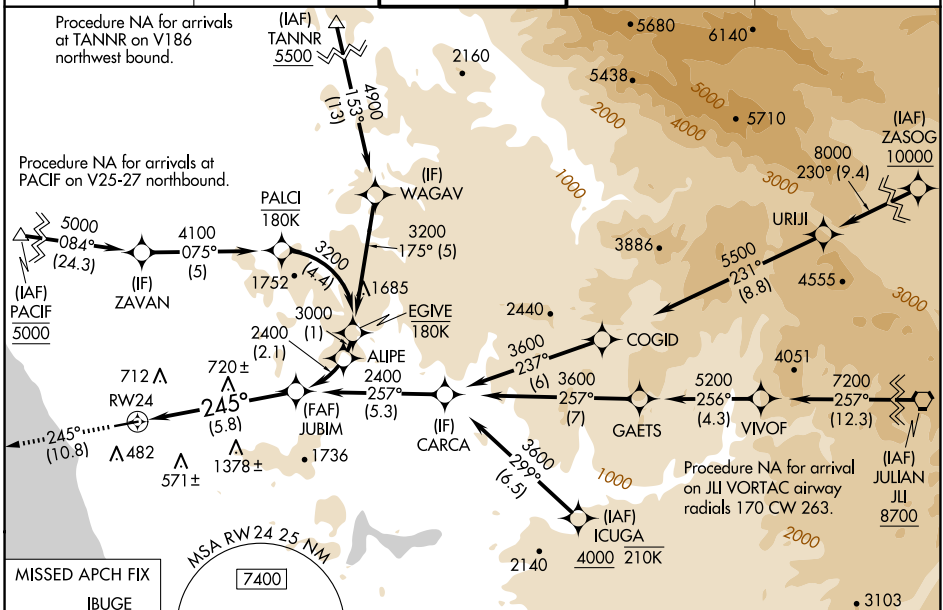
RNP AR APCH - GPS. Authorization required. From PALCI or EGIVE: RF, from CARCA, PALCI, URIJI, or WAGAV: min RNP 0.30. From JLI VORTAC: min RNP 0.60.

MALSR

MISSED APPROACH: Climb to 2000 on track 245° to IBUGE and hold.

For uncompensated Baro-VNAV systems, procedure NA below 5°C or above 54°C. For inop ALS increase RNP 0.10 visibility to RVR 6000 and RNP 0.30 visibility to 1 3/8 SM all Cats.

ATIS 120.15	SOCAL APP CON 127.3 323.0	PALOMAR TOWER* 118.6 (CTAF) 0 276.4	GND CON 121.8	CLNC DEL 134.85
-----------------------	-------------------------------------	--	-------------------------	---------------------------



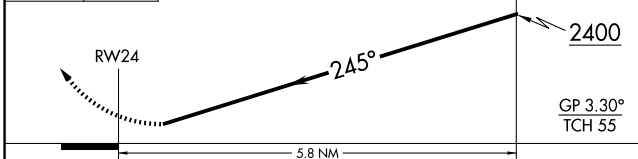
SW-3, 15 MAY 2025 to 12 JUN 2025

SW-3, 15 MAY 2025 to 12 JUN 2025

ELEV 331 **TDZE 326**

4 NM

IBUGE VGSI and RNAV glidepath not coincident (VGSI Angle 3.20/TCH 54). See planview for multiple IF locations.



CATEGORY	A	B	C	D
RNP 0.10 DA		745/40	419 (500-3/4)	
RNP 0.30 DA		931-1 3/8	605 (600-1 3/8)	

AUTHORIZATION REQUIRED

HIRL Rwy 6-24

4897 X 150

TWR