

WAAS CH 69509 W27A	APP CRS 275°	Rwy Idg 5108 TDZE 455 Apt Elev 461
--	------------------------	---

RNAV (GPS) RWY 27

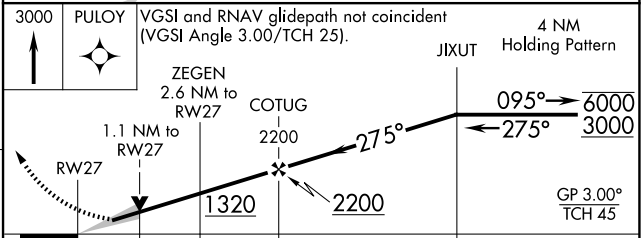
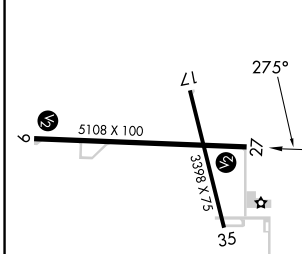
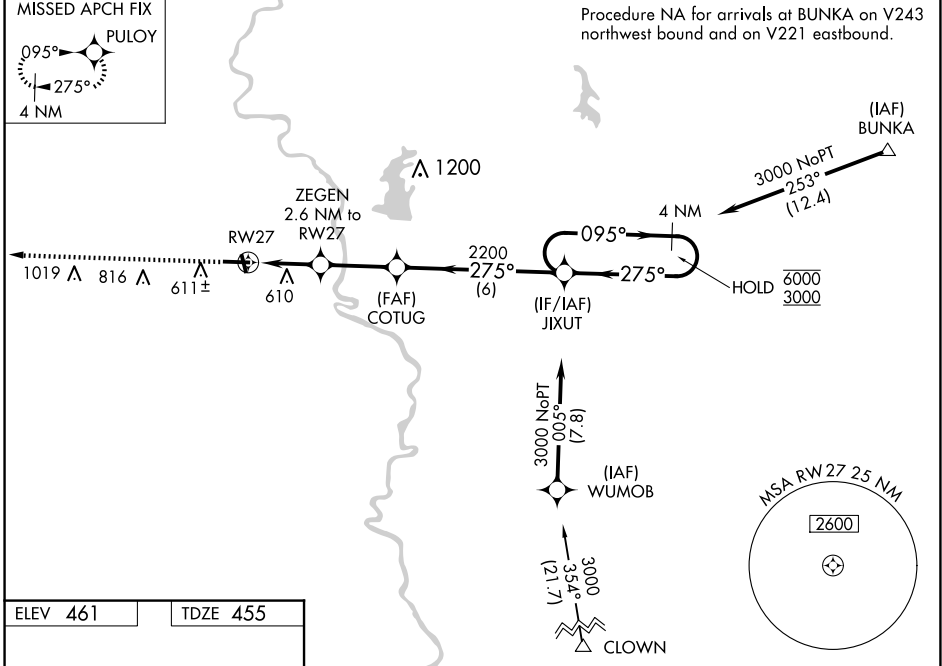
CRAWFORD COUNTY (RSV)

RNP APCH-GPS.

⚠ For uncompensated Baro-VNAV systems, LNAV/VNAV NA below -15°C or above 54°C.

MISSED APPROACH: Climb to 3000 direct PULOY and hold.

AWOS-3 120.50	HULMAN APP CON 135.35 339.8	UNICOM 123.0 (CTAF)
-------------------------	---------------------------------------	-------------------------------



CATEGORY	A	B	C	D
LPV DA		705-1	250 (300-1)	
LNAV/VNAV DA		845-1¼	390 (400-1¼)	
LNAV MDA	840-1	385 (400-1)	840-1⅛	385 (400-1⅛)
C CIRCLING	940-1 479 (500-1)	1080-1 619 (700-1)	1120-1¾ 659 (700-1¾)	1180-2¼ 719 (800-2¼)

ELEV 461 TDZE 455

REIL Rwy 17, 9 and 27 **⓪**
MIRL Rwy 9-27 and 17-35 **⓪**

EC-3, 15 MAY 2025 to 12 JUN 2025

EC-3, 15 MAY 2025 to 12 JUN 2025