

# CLTCH THREE DEPARTURE (RNAV)

NE-3, 15 MAY 2025 to 12 JUN 2025

**TOP ALTITUDE:**  
3000

P-56B



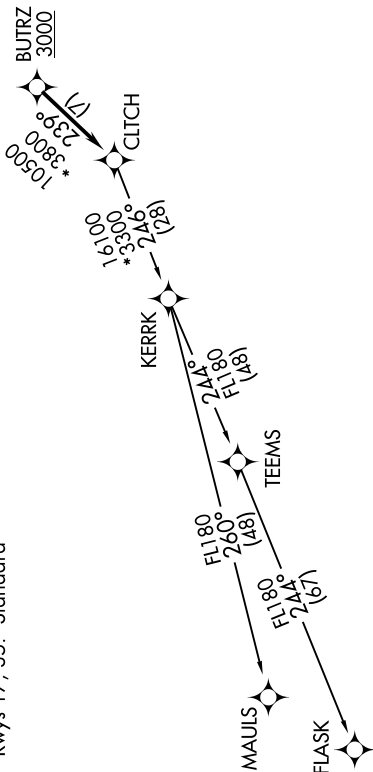
P-56A



POTOMAC DEP CON  
125.05 350.2  
AWOS-3  
125.225  
CLNC DEL  
120.5  
118.55 (When twr closed)  
GND CON  
120.5  
LEESBURG TOWER \*  
127.5 (CTAF)  
UNICOM  
122.975

NOTE: RNAV 1.  
NOTE: RADAR required.  
NOTE: DME/DME/IRU or GPS required.  
NOTE: Turbo-jets only.  
NOTE: Takeoff Rwy 35 requires a climb to 1200 on heading 353° before proceeding on the ATC assigned heading for obstacle avoidance.

**TAKEOFF MINIMUMS:**  
Rwys 17, 35: Standard



NOTE: Chart not to scale.

## DEPARTURE ROUTE DESCRIPTION

Climb on heading assigned by ATC, expect RADAR vectors to BUTRZ, then on track 239° to CLTCH, thence. . . .

. . . . on assigned transition, maintain altitude assigned by ATC, expect clearance to filed altitude within ten (10) minutes after departure.

**FLASK TRANSITION (CLTCH3:FLASK)**  
**MAULS TRANSITION (CLTCH3:MAULS)**

NE-3, 15 MAY 2025 to 12 JUN 2025