

VORTAC GJ <b>115.4</b> Chan <b>101</b>	APP CRS <b>102°</b>	Rwy Idg TDZE <b>777</b> Apt Elev <b>778</b>	<b>6500</b>
--	------------------------	---	-------------

# VOR RWY 9

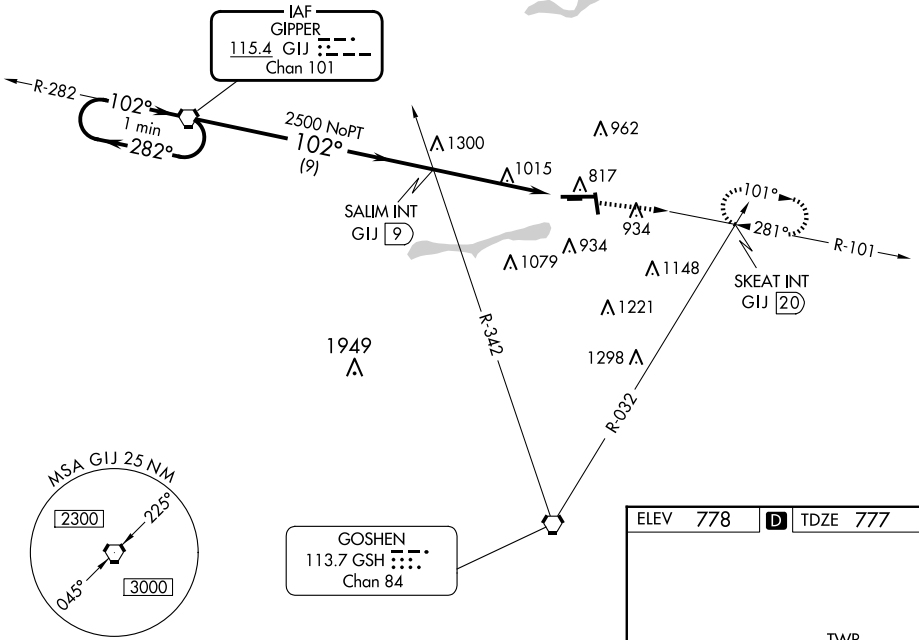
ELKHART MUNI (EKM)

**▼** Circling Rwy 36 NA at night. Circling NA to Rwy 8 and 26. Rwy 9 helicopter visibility reduction below  $\frac{3}{4}$  SM NA. When local altimeter setting not received, use South Bend altimeter setting and increase all MDA 40 feet. VDP NA when using South Bend altimeter setting.

**▲** MISSED APPROACH: Climb to 2500 via GJ R-101 to SKEAT INT/GJ 20 DME and hold.

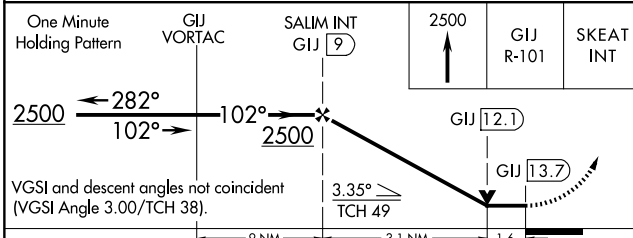
AWOS-3 <b>124.475</b>	SOUTH BEND APP CON ★ <b>118.55 257.8</b>	ELKHART TOWER ★ <b>119.5</b> (CTAF) <b>0</b>	GND CON <b>121.8</b>	CLNC DEL <b>121.8</b>	CLNC DEL <b>119.7</b> (When twr closed)	UNICOM <b>122.95</b>
--------------------------	---	---	-------------------------	--------------------------	---	-------------------------

NoPT for arrivals on GJ VORTAC  
airway radials 209 CW 310.



EC-2, 15 MAY 2025 to 12 JUN 2025

EC-2, 15 MAY 2025 to 12 JUN 2025



ELEV 778	<b>D</b> TDZE 777
----------	-------------------

MIRL Rwy 18-36 **0**  
HIRL Rwy 9-27 **0**  
REIL Rwy 9, 18 and 36 **0**

FAF to MAP 4.7 NM

Knots	60	90	120	150	180
Min:Sec	4:42	3:08	2:21	1:53	1:34

CATEGORY	A	B	C	D
S-9	1340-1 563 (600-1)		1340-1½ 563 (600-1½)	1340-1¾ 563 (600-1¾)
<b>C</b> CIRCLING	1340-1 562 (600-1)		1380-1¾ 602 (700-1¾)	1580-2½ 802 (900-2½)