

SINTON, TEXAS

AL-5274 (FAA)

24137

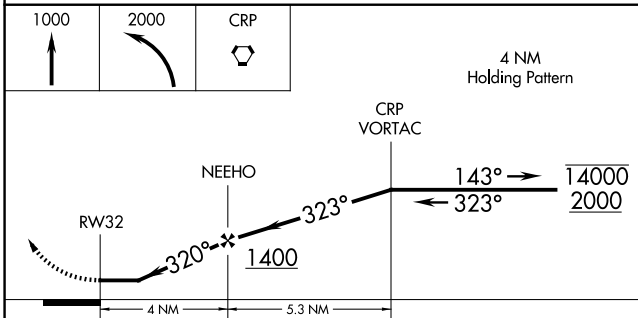
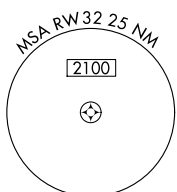
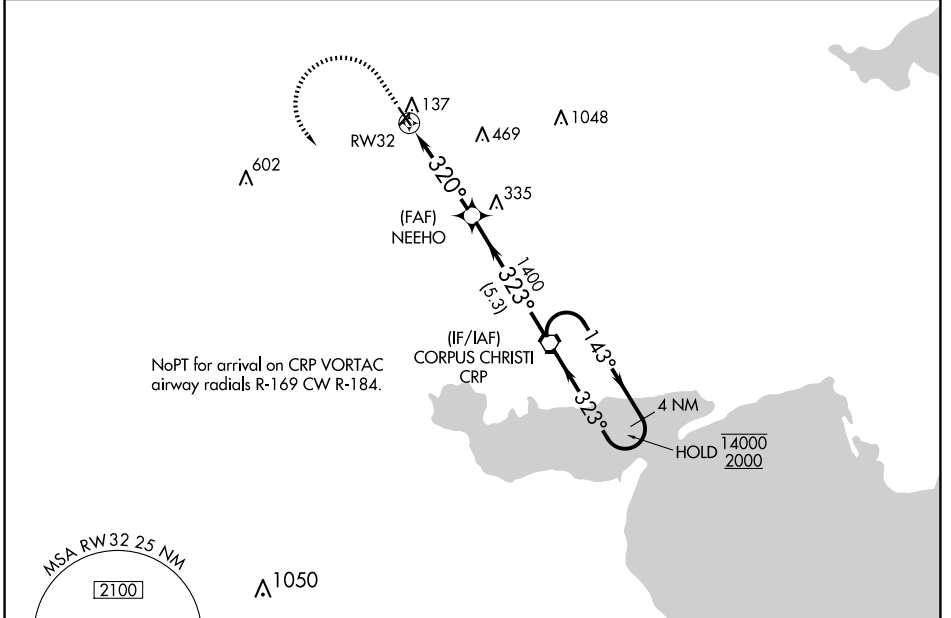
APP CRS 320°	Rwy Idg 3923
	TDZE 48
	Apt Elev 48

RNAV (GPS) RWY 32

SINTON (T69)

RNP APCH.	MISSED APPROACH: Climb to 1000 then climbing left turn to 2000 direct CRP VORTAC and hold.
<p>Procedure NA at night.</p> <p>Rwy 32 helicopter visibility reduction below 1 SM NA.</p>	

AWOS-3 118.25	CORPUS APP CON 120.9 348.725	UNICOM 122.8 (CTAF) 0
-------------------------	--	---------------------------------



ELEV 48	TDZE 48
----------------	----------------

MIRL Rwy 14-32 0
REIL Rws 14 and 32 0

CATEGORY	A	B	C	D
LNAV MDA	520-1	472 (500-1)		NA
CIRCLING	620-1 572 (600-1)	720-1 672 (700-1)		NA

SINTON, TEXAS
Orig-B 31DEC20

28°02' N-97°33' W

RNAV (GPS) RWY 32

SINTON (T69)

SC-3, 15 MAY 2025 to 12 JUN 2025

SC-3, 15 MAY 2025 to 12 JUN 2025