

SINTON, TEXAS

AL-5274 (FAA)

24137

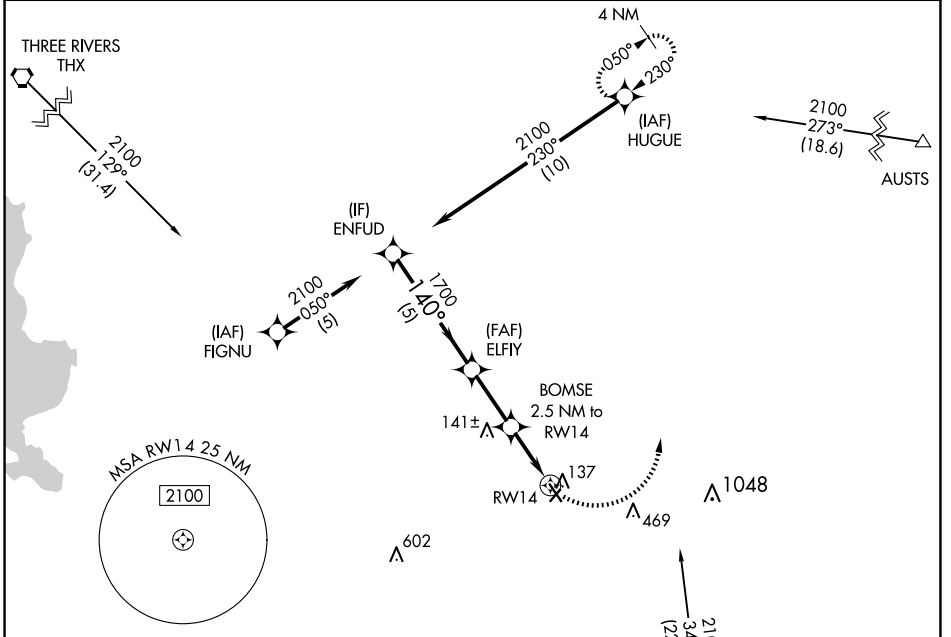
APP CRS	Rwy Idg	4073
140°	TDZE	48
	Apt Elev	48

RNAV (GPS) RWY 14

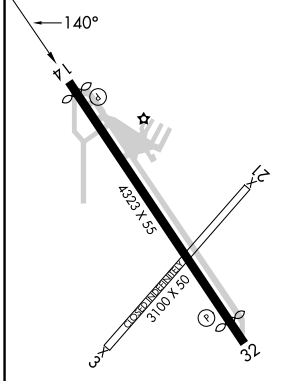
SINTON (T69)

RNP APCH.	MISSED APPROACH: Climbing left turn to 2100 direct HUGUE and hold.
<p>▼ Procedure NA at night.</p> <p>▲ Rwy 14 helicopter visibility reduction below 1 SM NA.</p>	

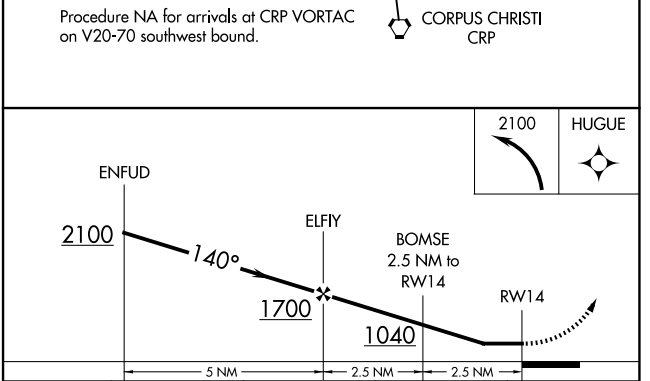
AWOS-3 118.25	CORPUS APP CON 120.9 348.725	UNICOM 122.8 (CTAF) 0
-------------------------	--	---------------------------------



ELEV 48	TDZE 48
---------	---------



Procedure NA for arrivals at CRP VORTAC on V20-70 southwest bound.



CATEGORY	A	B	C	D
LNAV MDA	480-1	432 (500-1)		NA
CIRCLING	620-1 572 (600-1)	720-1 672 (700-1)		NA

SINTON, TEXAS
Orig-B 31DEC20

28°02'N-97°33'W

RNAV (GPS) RWY 14

SINTON (T69)

SC-3, 15 MAY 2025 to 12 JUN 2025

SC-3, 15 MAY 2025 to 12 JUN 2025