

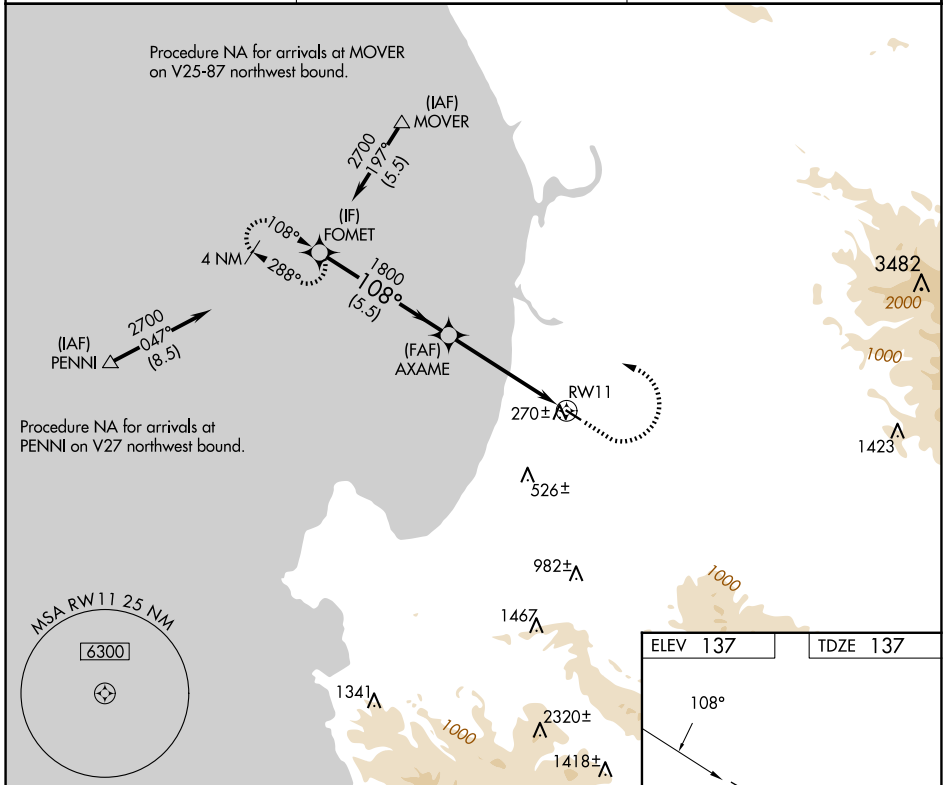
APP CRS	Rwy ldg	3483
108°	TDZE	137
	Apt Elev	137

RNAV (GPS) RWY 11

MARINA MUNI (OAR)

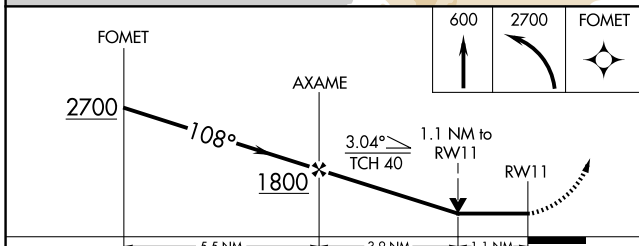
RNP APCH.	MISSED APPROACH: Climb to 600, then climbing left turn to 2700 direct FOMET and hold, continue climb-in-hold to 2700.
<p>▼</p> <p>▲ NA Rwy 11 helicopter visibility reduction below ¼ SM NA.</p>	

AWOS-3PT 134.025	NORCAL APP CON 133.0 251.15	UNICOM 122.7 (CTAF) 0
----------------------------	---------------------------------------	---------------------------------



SW-2, 15 MAY 2025 to 12 JUN 2025

SW-2, 15 MAY 2025 to 12 JUN 2025



ELEV 137	TDZE 137
MIRL Rwy 11-29 0	

CATEGORY	A	B	C	D
LNVA MDA	520-1	383 (400-1)		NA
CIRCLING	640-1 503 (600-1)	760-1 623 (700-1)		NA