

WAAS CH 56506 W07A	APP CRS 069°	Rwy Idg TDZE Apt Elev	5350 958 958
--	------------------------	-----------------------------	---

RNAV (GPS) RWY 7

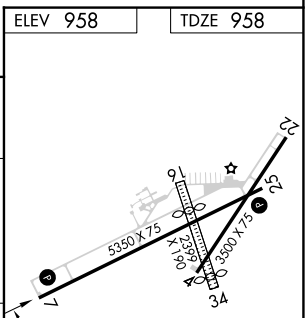
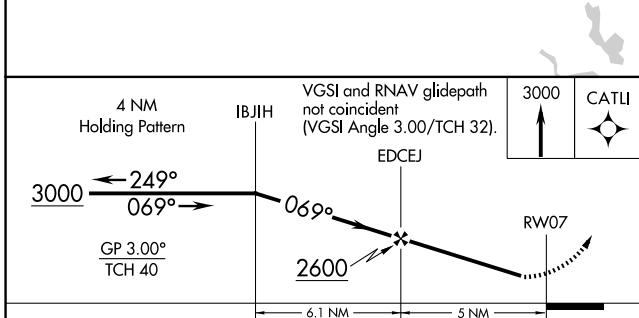
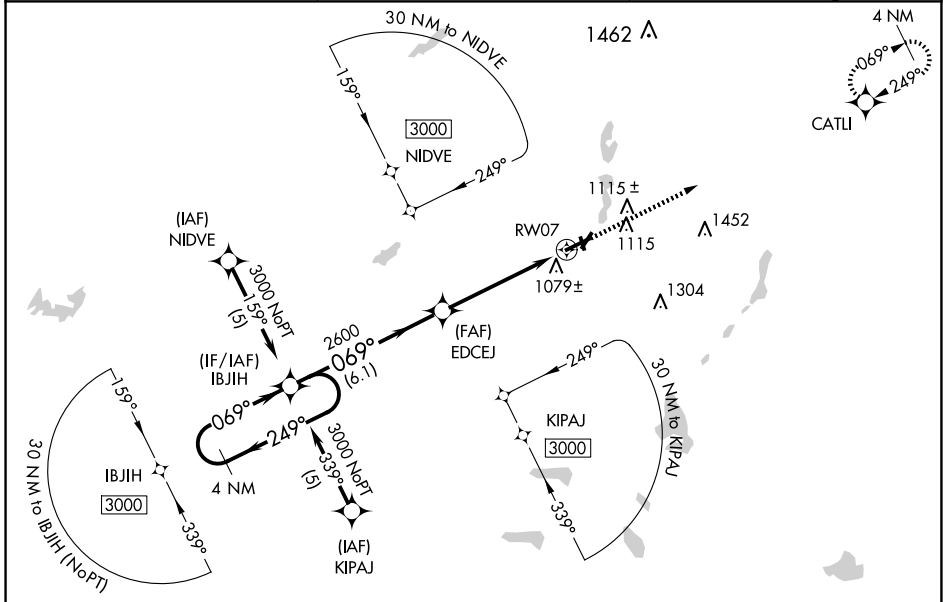
BRANCH COUNTY MEML (OEB)

RNP APCH.

⚠ Rwy 7 helicopter visibility reduction below 3/4 SM NA. Baro-VNAV NA when using Sturgis altimeter setting. For uncompensated Baro-VNAV systems, LNAV/VNAV NA below -16°C or above 54°C. Circling NA to Rwy 16 and 34. When local altimeter setting not received, use Sturgis altimeter setting and increase all DAs 48 feet and LPV visibility 1/4 mile all Cats and all MDAs 60 feet and LNAV Cat C visibility 1/4 mile.

MISSED APPROACH:
Climb to 3000 direct CATLI and hold.

AWOS-3 118.125	GREAT LAKES APP CON * 121.2 239.25	UNICOM 122.7 (CTAF)
--------------------------	--	-------------------------------



CATEGORY		A	B	C	D
LPV	DA	1306-1 1/4	348 (400-1 1/4)		NA
LNAV/VNAV	DA	1417-1 3/4	459 (500-1 3/4)		NA
LNAV	MDA	1420-1	462 (500-1)	1420-1 1/4 462 (500-1 1/4)	NA
CIRCLING		1420-1 462 (500-1)	1440-1 482 (500-1)	1560-1 3/4 602 (700-1 3/4)	NA

MIRL Rwy 4-22 and 7-25 **ⓘ**
REIL Rwy 7 and 25 **ⓘ**

EC-1, 15 MAY 2025 to 12 JUN 2025

EC-1, 15 MAY 2025 to 12 JUN 2025