

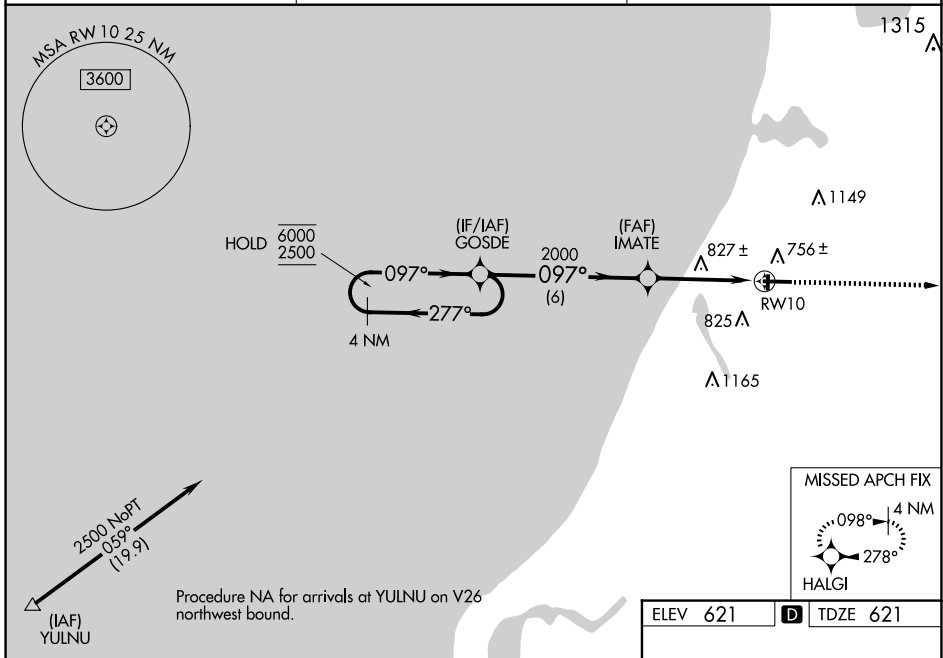
WAAS CH <b>60933</b> <b>W10A</b>	APP CRS <b>097°</b>	Rwy Idg <b>5501</b> TDZE <b>621</b> Apt Elev <b>621</b>
--	------------------------	---

# RNAV (GPS) RWY 10

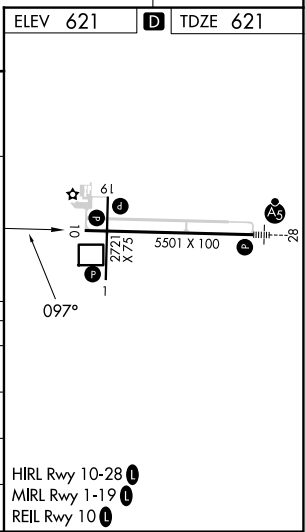
MANISTEE COUNTY/BLACKER (MBL)

RNP APCH - GPS.	MISSED APPROACH: Climb to 3000 direct HALGI and hold.
<p><b>⚠</b> Circling Rwy 1, 19 NA at night. Rwy 10 helicopter visibility reduction below <math>\frac{3}{4}</math> SM NA. For uncompensated Baro-VNAV systems, LNAV/VNAV NA below -16°C or above 54°C.</p>	

AWOS-3PT <b>118.825</b>	MINNEAPOLIS CENTER <b>120.85 322.35</b>	UNICOM <b>122.8 (CTAF)</b> <b>Ⓛ</b>
----------------------------	--	--



4 NM Holding Pattern	VGSI and RNAV glidepath not coincident (VGSI Angle 3.00/TCH 30).		3000	HALGI
GOSDE	IMATE			
6000 ← 277°	2500 → 097°	097°	2000	1.4 NM to RWY 10
GP 3.00°	TCH 53			
	6 NM	2.8 NM	1.4 NM	
CATEGORY	A	B	C	D
LPV DA	890- $\frac{7}{8}$		269 (300- $\frac{7}{8}$ )	
LNAV/VNAV DA	1091-1 $\frac{3}{8}$		470 (500-1 $\frac{3}{8}$ )	
LNAV MDA	1080-1	459 (500-1)	1080-1 $\frac{3}{8}$	459 (500-1 $\frac{3}{8}$ )
CIRCLING	1160-1 539 (600-1)	1220-1 599 (600-1)	1400-2 $\frac{1}{4}$ 779 (800-2 $\frac{1}{4}$ )	1500-2 $\frac{3}{4}$ 879 (900-2 $\frac{3}{4}$ )



EC-1, 15 MAY 2025 to 12 JUN 2025

EC-1, 15 MAY 2025 to 12 JUN 2025