

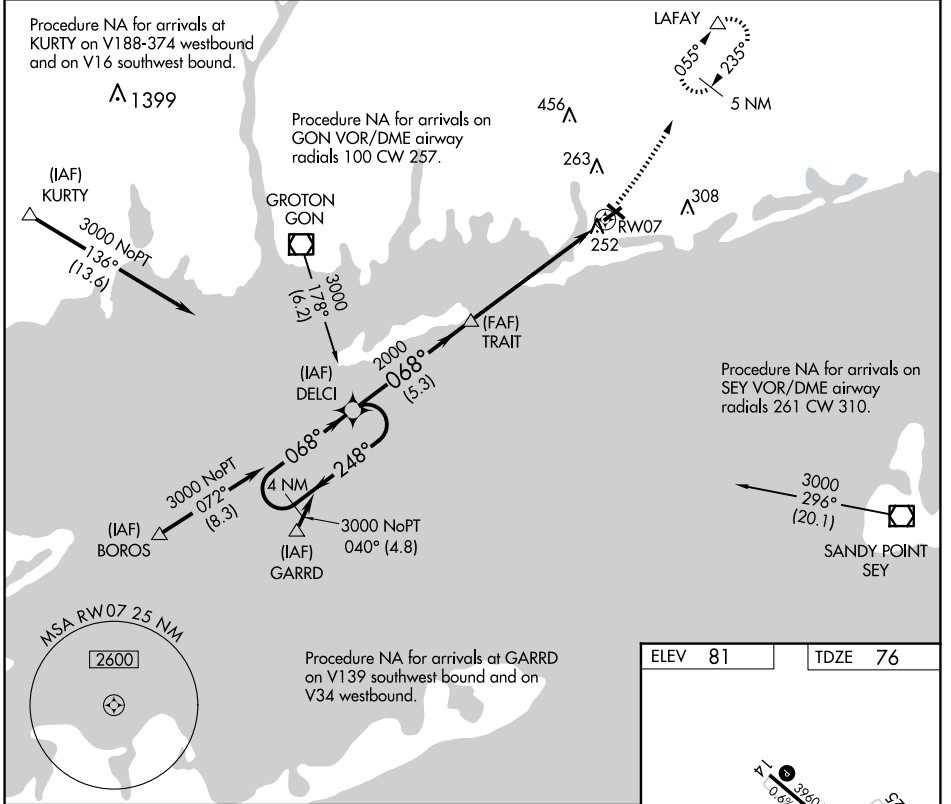
APP CRS <b>068°</b>	Rwy Idg <b>4010</b>
	TDZE <b>76</b>
	Apt Elev <b>81</b>

# RNAV (GPS) RWY 7

WESTERLY STATE (WST)

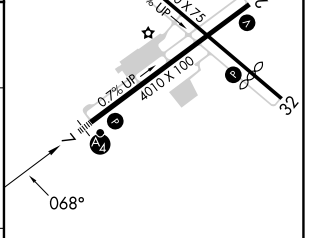
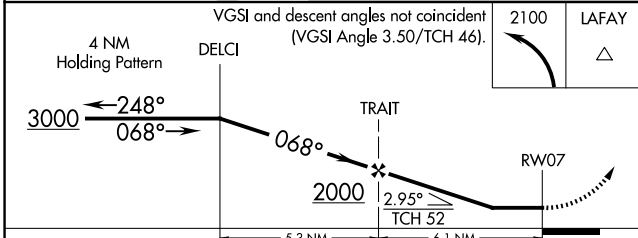
<b>▼</b> Inoperative table does not apply. DME/DME RNP-0.3 NA. <b>▲</b> NA	<b>MALSF</b> 	<b>MISSED APPROACH:</b> Climbing left turn to 2100 direct LAFAY and hold.
---	------------------	---

<b>ASOS</b> <b>132.375</b>	<b>PROVIDENCE APP CON *</b> <b>119.45 319.2</b>	<b>UNICOM</b> <b>123.0 (CTAF) 0</b>
-------------------------------	--	--



NE-1, 15 MAY 2025 to 12 JUN 2025

NE-1, 15 MAY 2025 to 12 JUN 2025



CATEGORY	A	B	C	D
LNVA MDA	520-1 444 (500-1)	520-1¼ 444 (500-1¼)	520-1½ 444 (500-1½)	520-1¾ 444 (500-1¾)
CIRCLING	580-1 499 (500-1)	720-1¾ 639 (700-1¾)	760-2¼ 679 (700-2¼)	

REIL Rwy 14, 25 and 32 **0**  
MIRL Rwy 7-25 and 14-32 **0**