

VOR/DME COD 111.8 Chan 55	APP CRS 191°	Rwy Idg TDZE Apt Elev N/A N/A 5102
---	------------------------	--

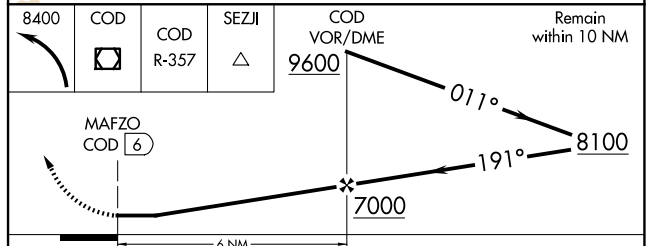
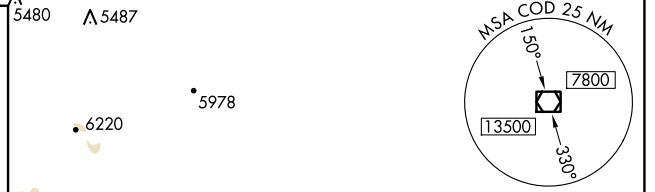
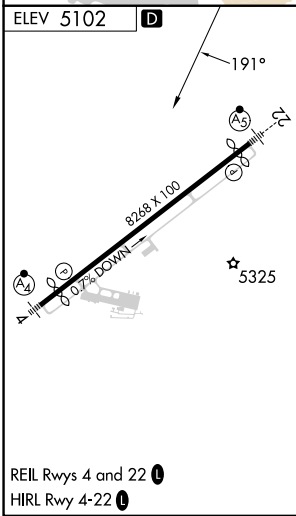
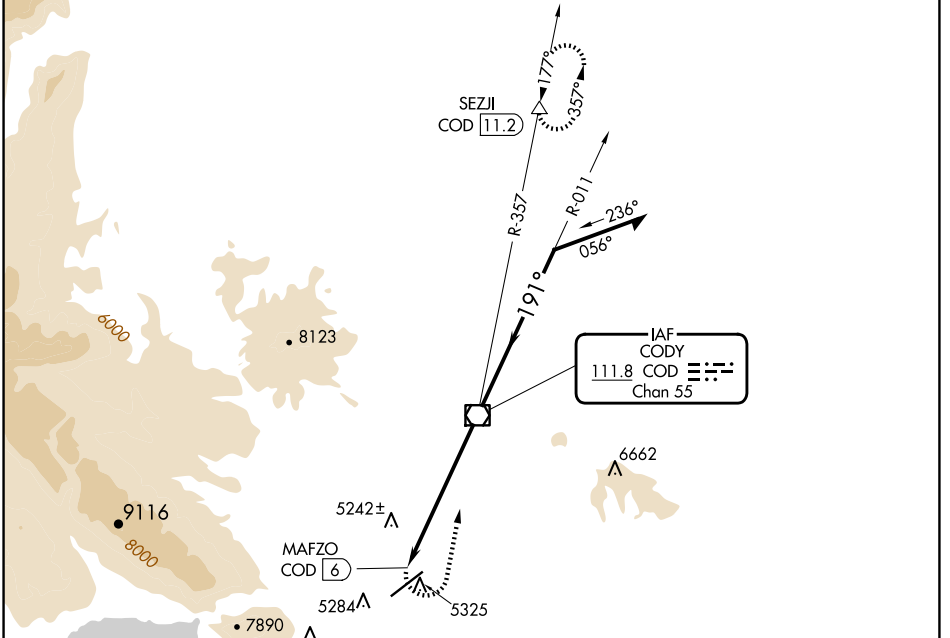
VOR-A

YELLOWSTONE RGNL (COD)

DME required.

MISSED APPROACH: Climbing left turn to 8400 direct COD VOR/DME and on COD VOR/DME R-357 to SEZJI/COD 11.2 DME and hold.

AWOS-3PT 135.075	SALT LAKE CENTER 127.75 351.9	UNICOM 122.8 (CTAF)
----------------------------	---	-------------------------------



CATEGORY	A	B	C	D
CIRCLING	5780-1 678 (700-1)	5920-1¼ 818 (900-1¼)	5940-2½ 838 (900-2½)	7000-3 1898 (1900-3)

NW-1, 15 MAY 2025 to 12 JUN 2025

NW-1, 15 MAY 2025 to 12 JUN 2025