

| | | |
|--|------------------------|---|
| WAAS CH 70526 W05A | APP CRS 054° | Rwy Idg 5502 TDZE 455 Apt Elev 459 |
|--|------------------------|---|

RNAV (GPS) RWY 5

MOORE COUNTY (SOP)

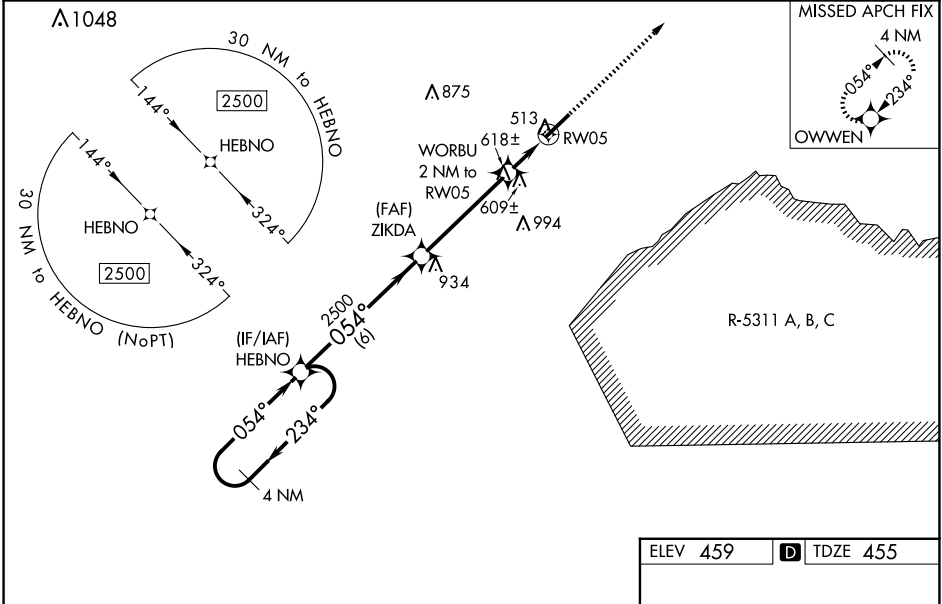
⚠ For uncompensated Baro-VNAV systems, LNAV/VNAV NA below -15°C (5°F) or above 54°C (130°F). DME/DME RNP-0.3 NA. For inop MALSR, increase LNAV/VNAV all Cats visibility to 7/8 mile, LNAV Cats A/B visibility to 1 mile and LNAV Cats C/D visibility to 1 1/8 mile. When local altimeter setting not received, use Sanford altimeter setting and increase all DA 88 feet and all MDA 100 feet, increase LNAV/VNAV all Cats visibility 1/8 mile, LNAV Cats C/D visibility 1/4 mile, and Circling Cat C 1/2 mile. When using Sanford altimeter setting, for inop MALSR increase LNAV/VNAV all Cats visibility to 1 1/8 mile, LNAV Cats A/B visibility to 1 mile, and LNAV Cat C/D visibility to 1 3/8 mile. Baro-VNAV and VDP NA when using Sanford altimeter setting.

MALSR



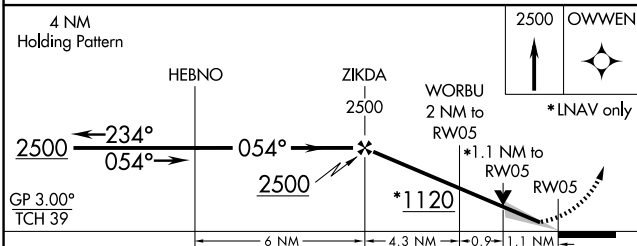
MISSED APPROACH:
Climb to 2500 direct
OWWEN and hold.

| | | | |
|----------------------------|--|--------------------------|--------------------------------|
| AWOS-3PT 127.575 | FAYETTEVILLE APP CON 127.8 343.725 | CLNC DEL 127.0 | UNICOM 123.05 (CTAF) |
|----------------------------|--|--------------------------|--------------------------------|



SE-2, 15 MAY 2025 to 12 JUN 2025

SE-2, 15 MAY 2025 to 12 JUN 2025



| | |
|----------|-------------------|
| ELEV 459 | D TDZE 455 |
|----------|-------------------|

| CATEGORY | A | B | C | D |
|-------------------|---------------|-------------|-----------------|--------------|
| LPV DA | 655-1/2 | | 200 (200-1/2) | |
| LNAV/VNAV DA | 750-1/2 | | 295 (300-1/2) | |
| LNAV MDA | 860-1/2 | | 860-3/4 | |
| | 405 (500-1/2) | | 405 (500-3/4) | |
| C CIRCLING | 880-1 | 920-1 | 1100-1 1/4 | 1360-3 |
| | 421 (500-1) | 461 (500-1) | 641 (700-1 3/4) | 901 (1000-3) |

