

WAAS CH 53408 W18A	APP CRS 181°	Rwy Idg 4016 TDZE 16 Apt Elev 16
--	------------------------	---

RNAV (GPS) RWY 18

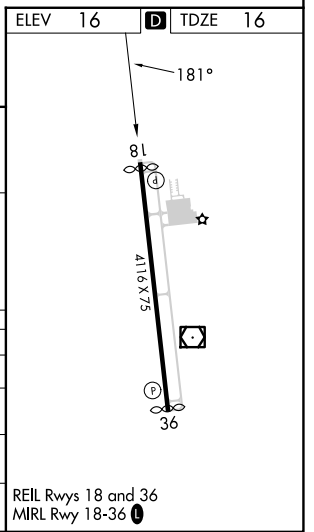
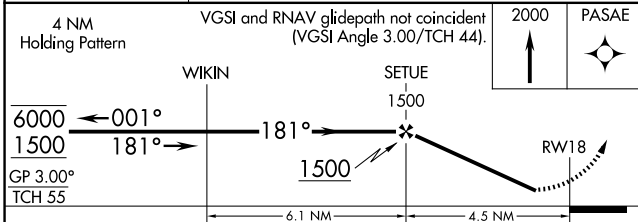
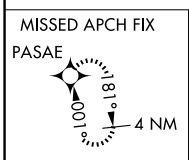
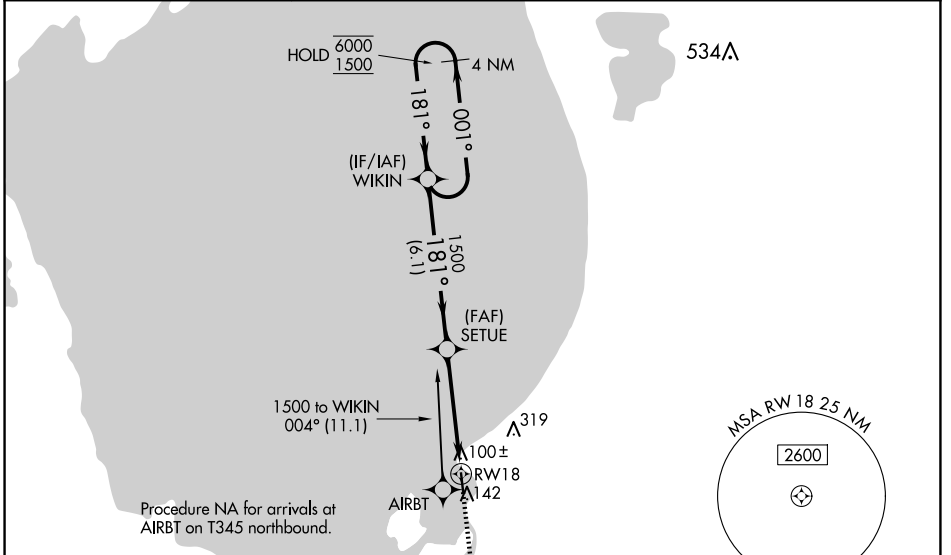
PALM BEACH COUNTY GLADES (PHK)

RNP APCH - GPS.

▽ Rwy 18 helicopter visibility reduction below 3/4 SM NA. Use PBI altimeter setting;
△ NA when not received, procedure NA. Baro-VNAV NA.

MISSED APPROACH: Climb to 2000 direct PASAE and hold.

PBI ASOS 123.75	PALM BEACH APP CON 125.2 317.4	UNICOM 122.8 (CTAF) 0
---------------------------	--	---------------------------------



CATEGORY	A	B	C	D
LPV DA	358-1		342 (400-1)	
LNAV/VNAV DA	440-1 1/4		424 (500-1 1/4)	
LNAV MDA	440-1	424 (500-1)	440-1 1/4	424 (500-1 1/4)
C CIRCLING	580-1	564 (600-1)	760-2 1/4 744 (800-2 1/4)	760-2 1/2 744 (800-2 1/2)

REIL Rwy 18 and 36
MIRL Rwy 18-36 **0**

SE-3, 15 MAY 2025 to 12 JUN 2025

SE-3, 15 MAY 2025 to 12 JUN 2025