

VORTAC OSH 116.75 Chan 114 (Y)	APP CRS 165°	Rwy Idg TDZE Apt Elev	5941 791 808
--	------------------------	-----------------------------	---

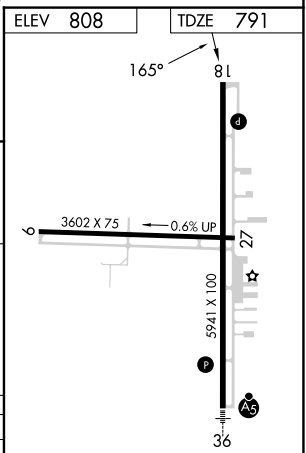
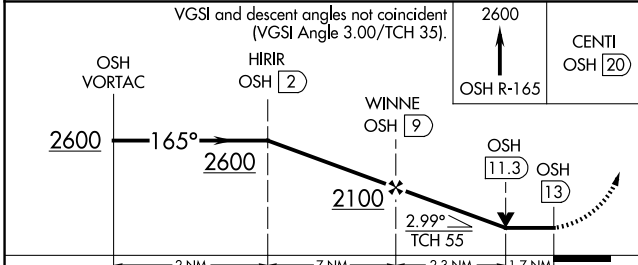
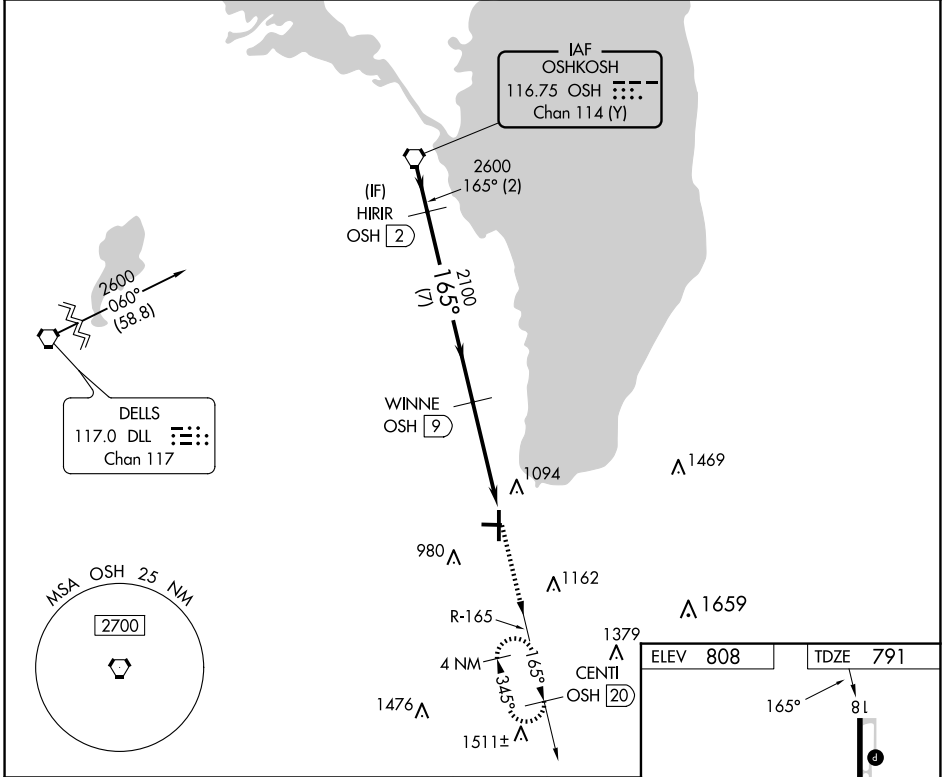
VOR RWY 18

FOND DU LAC COUNTY (F.L.D)

⚠ Helicopter visibility reduction below 3/4 SM NA. When local altimeter setting not received, use Oshkosh altimeter setting: increase all MDA 40 feet; increase S-18 Cat C/D visibility 1/8 mile, and increase Circling Cat C/D visibility 1/4 mile. Night landing: Rwy 9, 27 NA. VDP NA when using Oshkosh altimeter setting. DME required.

MISSED APPROACH: Climb to 2600 on OSH VORTAC R-165 to CENTI/OSH 20 DME and hold.

ASOS 134.0	MILWAUKEE APP CON 127.0 263.075	UNICOM 123.05 (CTAF) 0
----------------------	---	----------------------------------



CATEGORY	A	B	C	D
S-18	1360-1	569 (600-1)	1360-1 5/8	569 (600-1 5/8)
C CIRCLING	1400-1	592 (600-1)	1520-2 712 (800-2)	1520-2 1/4 712 (800-2 1/4)

REIL Rwy 18
MIRL Rwy 9-27
HIRL Rwy 18-36

EC-3, 15 MAY 2025 to 12 JUN 2025

EC-3, 15 MAY 2025 to 12 JUN 2025