

RNAV (GPS) RWY 13

APCH CRS **132°** Rwy ldg **6100**
 TDZE **1150**
 Arpt Elev **1150**

[USA]

RAY S. MILLER AAF (KRYM)

RNP APCH-GPS

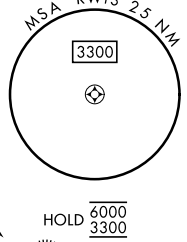
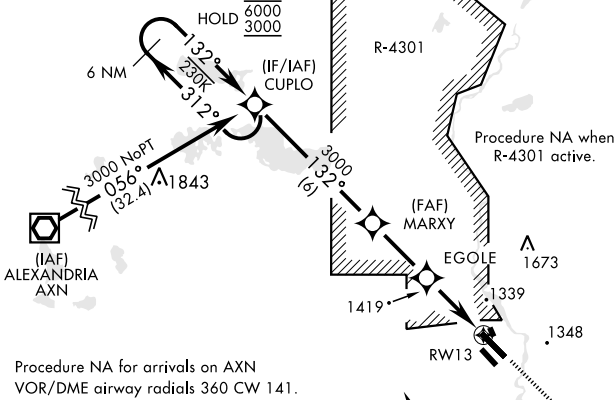
RADAR required for procedure entry at STC VOR/DME.

MISSED APPROACH: Climb to 3300 direct URHIL and hold.

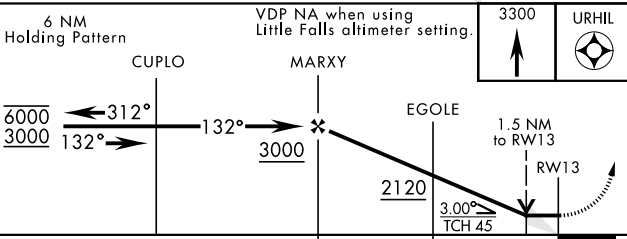
MINNEAPOLIS CENTER
118.05 239.0

MILLER TOWER ★
126.2 254.4

CLNC DEL
126.2

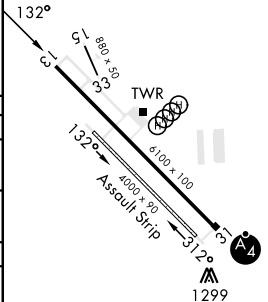


When local altimeter setting not received, use Little Falls altimeter setting.



ELEV 1150 TDZE 1150

CATEGORY	A	B	C	D
RNAV MDA	1680-1	530 (600-1)	1680-1½	530 (600-1½)
C CIRCLING	1680-1	530 (600-1)	1720-1½ 570 (600-1½)	2080-3 930 (1000-3)
LITTLE FALLS ALTIMETER SETTING				
RNAV MDA	1720-1	570 (600-1)	1720-1⅝	570 (600-1⅝)
C CIRCLING	1720-1	570 (600-1)	1760-1¾ 610 (700-1¾)	2120-3 970 (1000-3)



RNAV (GPS) RWY 13

NC-1, 15 MAY 2025 to 12 JUN 2025

NC-1, 15 MAY 2025 to 12 JUN 2025