

CAMP RIPLEY, MINNESOTA

# ILS or LOC RWY 31

|   |                         |  |
|---|-------------------------|--|
| LOC I-RYM<br><b>111.1</b><br>Chan <b>48</b> | APCH CRS<br><b>312°</b> | Rwy Idg<br>TDZE <b>1146</b><br>Arpt Elev <b>1150</b> |
|---|-------------------------|--|

[USA]

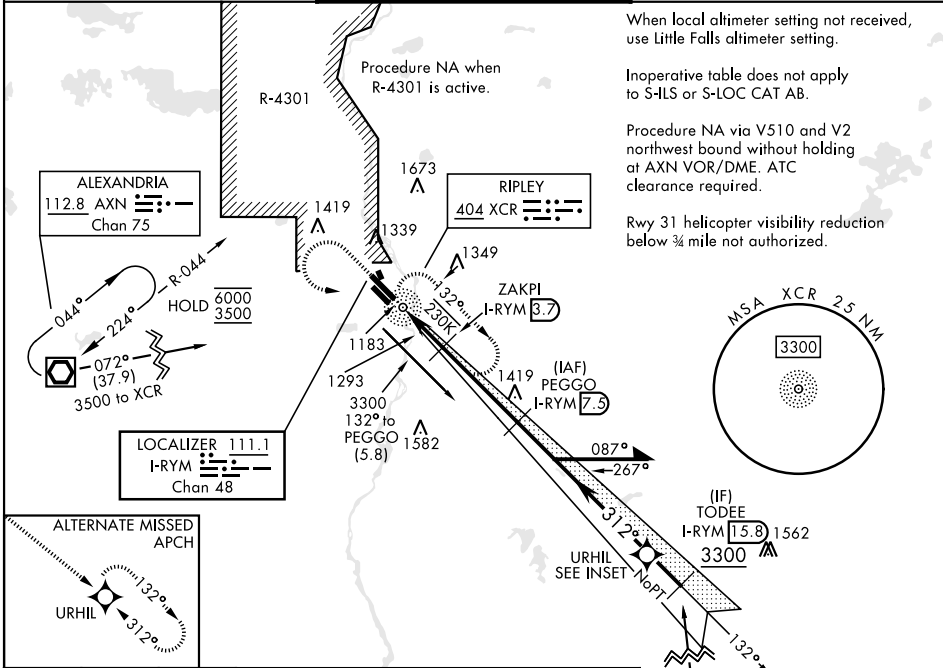
RAY S. MILLER AAF (KRYM)

ADF, DME required. RADAR required for entry at STC VOR/DME.

- ▼ \* When ALS inop, increase CAT CD vis to 1¼ miles.
- ▲ \*\* When ALS inop, increase CAT CD vis to 1¾ miles.

**MALSF**  
MISSED APPROACH: Climb to 2000, then climbing left turn to 3500 direct XCR NDB and hold. Continue climb in hold to 3500.

|   |  |                          |
|---|--|--------------------------|
| MINNEAPOLIS CENTER<br><b>118.05 239.0</b> | MILLER TOWER ★<br><b>126.2 0 254.4</b> | CLNC DEL<br><b>126.2</b> |
|---|--|--------------------------|

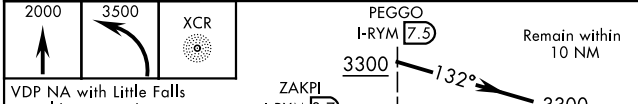


When local altimeter setting not received, use Little Falls altimeter setting.

Inoperative table does not apply to S-ILS or S-LOC CAT AB.

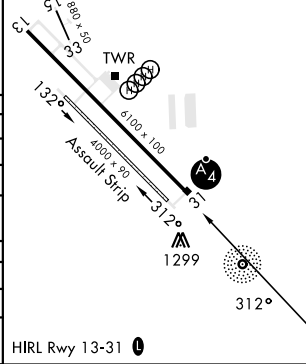
Procedure NA via V510 and V2 northwest bound without holding at AXN VOR/DME. ATC clearance required.

Rwy 31 helicopter visibility reduction below ¾ mile not authorized.



|   |                    |             |              |              |
|---|--------------------|-------------|--------------|--------------|
| CATEGORY                                | A                  | B           | C            | D            |
|   | 1396-1             | 250         | (300-1)      |              |
| S-ILS 31                                |                    |             |              |              |
| S-LOC 31*                               | 1580-1 434 (500-1) |             |              |              |
| CIRCLING                                | 1640-1             | 1660-1      | 1720-1½      | 2080-3       |
|   | 490 (500-1)        | 510 (600-1) | 570 (600-1½) | 930 (1000-3) |
| LITTLE FALLS ALTIMETER SETTING MINIMUMS |                    |             |              |              |
| S-ILS 31                                | 1420-1 274 (300-1) |             |              |              |
| S-LOC 31**                              | 1620-1             | 474 (500-1) | 1620-1½      | 474 (500-1½) |
| CIRCLING                                | 1680-1             | 1700-1      | 1760-1¾      | 2120-3       |
|   | 530 (600-1)        | 550 (600-1) | 610 (700-1¾) | 970 (1000-3) |

|           |           |
|-----------|-----------|
| ELEV 1150 | TDZE 1146 |
|-----------|-----------|



CAMP RIPLEY, MINNESOTA  
Amdt 7 05OCT23

46°05'N-94°22'W

RAY S. MILLER AAF (KRYM)

# ILS or LOC RWY 31

NC-1, 15 MAY 2025 to 12 JUN 2025

NC-1, 15 MAY 2025 to 12 JUN 2025