

VOR/DME IWD 108.8 Chan 25	APP CRS 079°	Rwy ldg TDZE 1230 Apt Elev 1230
----------------------------------------	------------------------	-----------------------------------------------------

VOR RWY 9
GOGEBIC/IRON COUNTY (IWD)

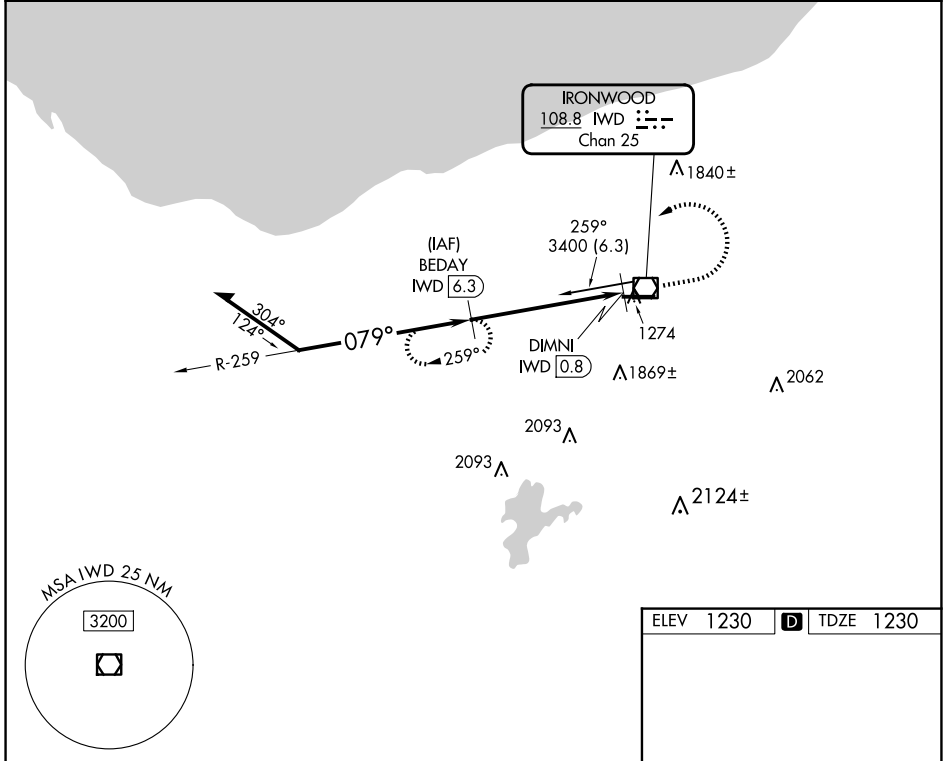
DME required.

⚠ Rwy 9 helicopter visibility reduction below 3/4 SM NA. When local altimeter setting not received, use ASX altimeter setting: increase all MDAs 140 feet and S-9 visibility Cat C 1/4 SM and Cat D 1/2 SM, and Circling visibility Cat B 1/4 SM.

⚠ -27°C

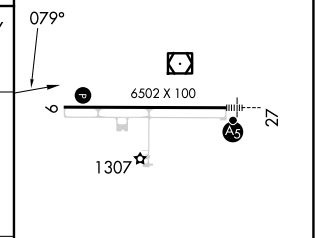
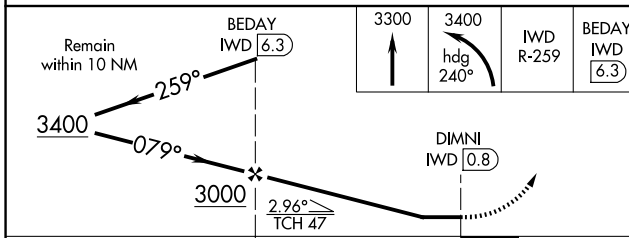
MISSED APPROACH: Climb to 3300 then climbing left turn to 3400 on heading 240° and IWD R-259 to BEDAY/6.3 DME and hold.

AWOS-3PT 125.175	MINNEAPOLIS CENTER 133.55	UNICOM 122.8 (CTAF)
----------------------------	-------------------------------------	-------------------------------



EC-1, 15 MAY 2025 to 12 JUN 2025

EC-1, 15 MAY 2025 to 12 JUN 2025



CATEGORY	A	B	C	D
S-9	1740-1	510 (600-1)	1740-1½	510 (600-1½)
CIRCLING	2100-1¼	870 (900-1¼)	2200-3 970 (1000-3)	2220-3 990 (1000-3)

ELEV 1230 **D** TDZE 1230

REIL Rwy 9 **①**
HIRL Rwy 9-27 **①**