

RNAV (GPS) RWY 14

APCH CRS	Rwy Idg	3025
139°	TDZE	12
	Arprt Elev	12

[USA]

FELKER AAF (KFAP)

RNP APCH - GPS

ODALS



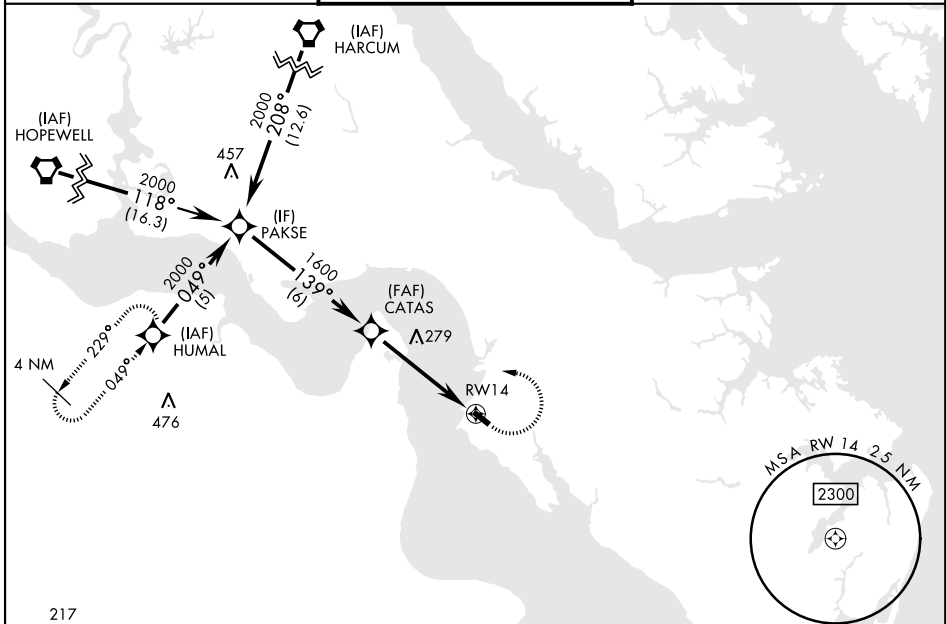
MISSED APPROACH: Climbing left turn to 2000 direct HUMAL and hold.

Procedure NA at night.
When local altimeter setting not received, use Newport News/Williamsburg Intl altimeter setting. Rwy 14 helicopter visibility reduction below 1 SM NA.

NORFOLK APP CON
125.7 335.625

TOWER ★
126.3 (CTAF) 0 269.25

GND CON
121.35 229.4



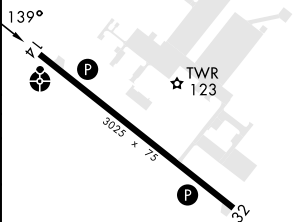
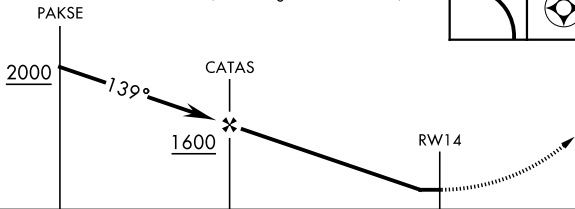
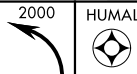
NOT FOR CIVIL USE

217

ELEV 12

TDZE 12

VGSI and Descent Angle not coincident
(VGSI Angle 3.00/TCH 48)



CATEGORY	A	B	C	D
RNAV MDA	480-1	468 (500-1)		NA
CIRCLING	480-1 468 (500-1)	560-1 548 (600-1)		NA
NEWPORT NEWS /WILLIAMSBURG INTL ALTIMETER				
RNAV MDA	500-1	488 (500-1)		NA
CIRCLING	500-1 488 (500-1)	580-1 568 (600-1)		NA

HIRL Rwy 14-32 0

RNAV (GPS) RWY 14

NE-3, 15 MAY 2025 to 12 JUN 2025

NE-3, 15 MAY 2025 to 12 JUN 2025