

FORT EUSTIS, VIRGINIA

COPTER RNAV (GPS) RWY 14

APCH CRS	Rwy Idg	3025
139°	TDZE	12
	Arprt Elev	12

[USA]

FELKER AAF (KFAP)

RNP APCH - GPS

ODALS



MISSED APPROACH: Climbing left turn to 2000 direct OGTOE and hold.

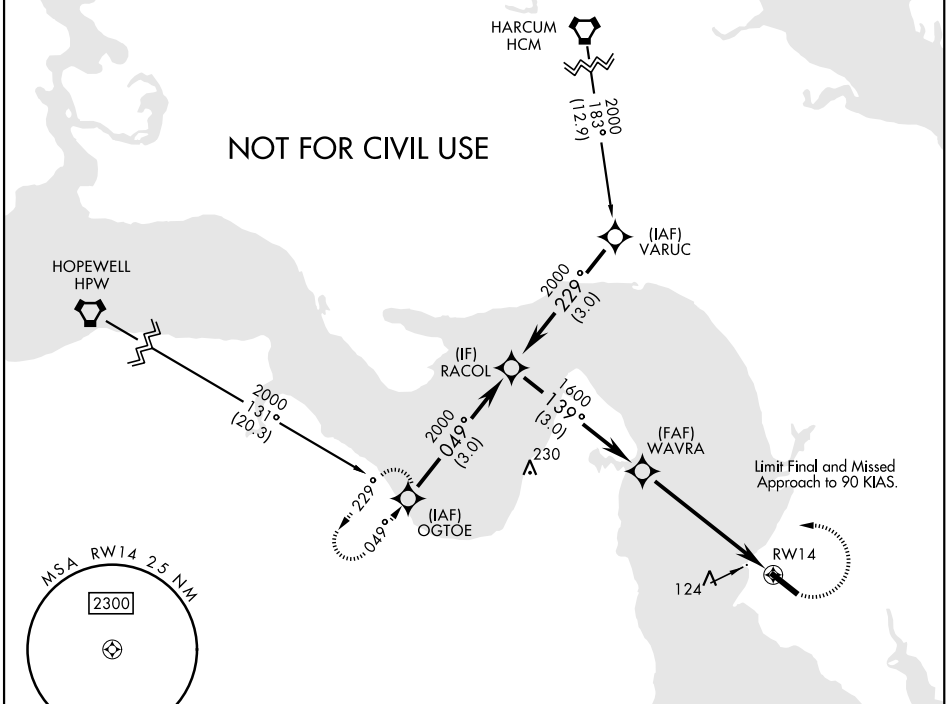
When local altimeter setting not received, use Newport News/Williamsburg Intl altimeter setting. VDP NA when using Newport News/Williamsburg Intl altimeter setting. Procedure NA at night.

NORFOLK APP CON
125.7 335.625

FELKER TOWER ★
126.3 (CTAF) 0 269.25

GND CON
121.35 229.4

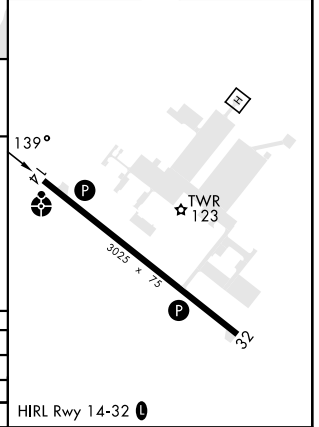
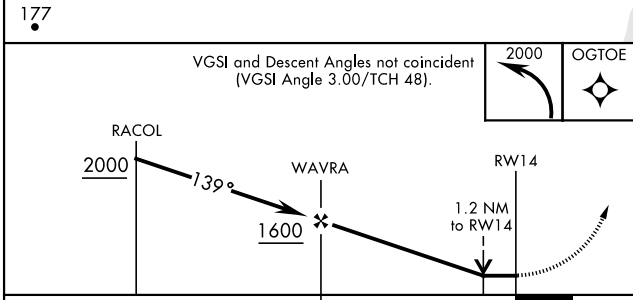
NOT FOR CIVIL USE



NE-3, 15 MAY 2025 to 12 JUN 2025

NE-3, 15 MAY 2025 to 12 JUN 2025

ELEV	12	TDZE	12
------	----	------	----



CATEGORY	COPTER		
LNAV MDA	420-¾	409	(500-¾)
NEWPORT NEWS / WILLIAMSBURG INTL ALTIMETER			
LNAV MDA	440-¾	429	(500-¾)

HIRL Rwy 14-32

FORT EUSTIS, VIRGINIA

37°08'N-76°37'W

FELKER AAF (KFAP)

Amdt 1 30NOV23

COPTER RNAV (GPS) RWY 14