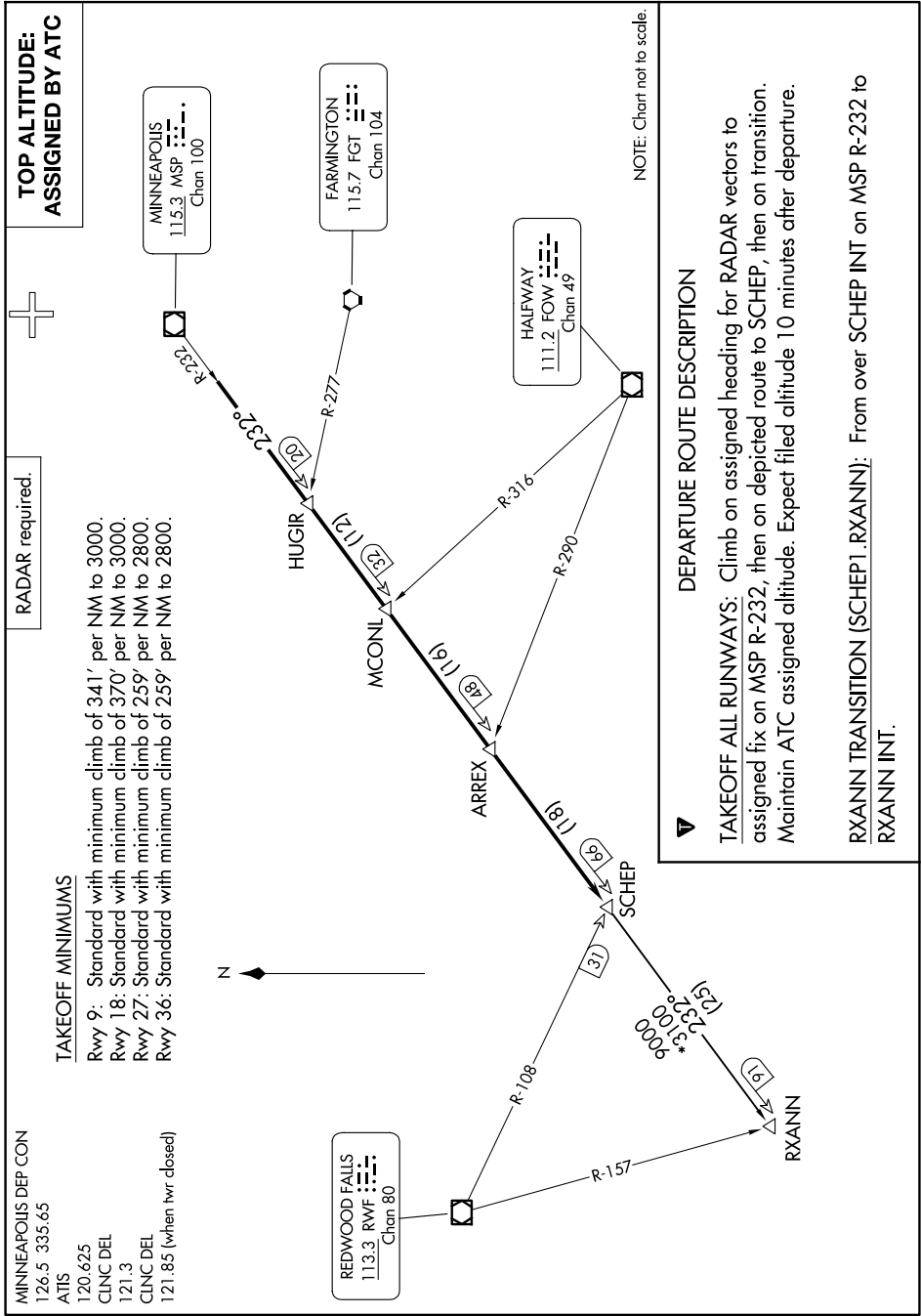


# SCHEP ONE DEPARTURE

NC-1, 15 MAY 2025 to 12 JUN 2025



**MINNEAPOLIS DEP CON**  
126.5° 335.65  
ATIS  
120.625  
CLNC DEL  
121.3  
CLNC DEL  
121.85 (when twr closed)

**TAKEOFF MINIMUMS**  
Rwy 9: Standard with minimum climb of 341' per NM to 3000.  
Rwy 18: Standard with minimum climb of 370' per NM to 3000.  
Rwy 27: Standard with minimum climb of 259' per NM to 2800.  
Rwy 36: Standard with minimum climb of 259' per NM to 2800.

**RADAR required.**

**TOP ALTITUDE:  
ASSIGNED BY ATC**

NOTE: Chart not to scale.

## DEPARTURE ROUTE DESCRIPTION

**TAKEOFF ALL RUNWAYS:** Climb on assigned heading for RADAR vectors to assigned fix on MSP R-232, then on depicted route to SCHEP, then on transition. Maintain ATC assigned altitude. Expect filed altitude 10 minutes after departure.

**RXANNI TRANSITION (SCHEP1.RXANNI):** From over SCHEP INT on MSP R-232 to RXANNI INT.

NC-1, 15 MAY 2025 to 12 JUN 2025