

(RST1.RST) 23334

# ROCHESTER ONE DEPARTURE

ANOKA COUNTY/BLAINE (JANES FLD) (A.N.E.)

AL-5202 (FAA)

MINNEAPOLIS, MINNESOTA

MINNEAPOLIS DEP CON  
 126.5 335.65  
 ATIS  
 120.625  
 CLNC DEL  
 121.3  
 CLNC DEL  
 121.85 (when twr closed)  
 ANOKA TOWER★  
 132.4



**TOP ALTITUDE:**  
**(JETS) 7000/**  
**(PROPS) 5000**

### TAKEOFF MINIMUMS

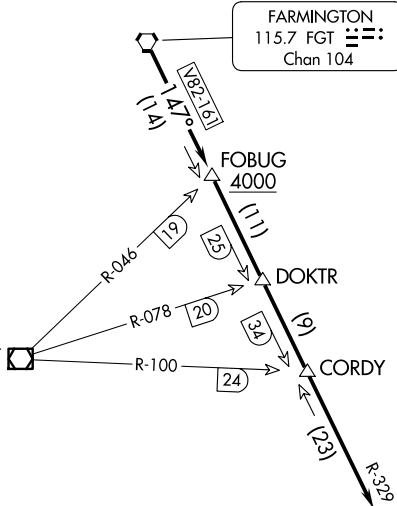
Rwy 9: Standard with minimum climb of 341' per NM to 3000.  
 Rwy 18: Standard with minimum climb of 371' per NM to 3000.  
 Rwy 27: Standard with minimum climb of 260' per NM to 2800.  
 Rwy 36: Standard with minimum climb of 259' per NM to 2800.

**FLYING CLOUD**  
 117.7 FCM  
  
 Chan 124

**FARMINGTON**  
 115.7 FGT  
  
 Chan 104

NOTE: RADAR required.

**HALFWAY**  
 111.2 FOW  
  
 Chan 49



### DEPARTURE ROUTE DESCRIPTION

**TAKEOFF ALL RUNWAYS:** Fly assigned heading and altitude for RADAR vectors to FGT VORTAC then on FGT R-147 and RST R-329 to RST VOR/DME. Cross FOBUG INT/FGT 14 DME at or above 4000, thence . . . .

. . . .on assigned transition or assigned route. Expect clearance to filed altitude/flight level 10 (ten) minutes after departure.

**WATERLOO TRANSITION (RST1.ALO):** From over RST VOR/DME on RST R-168 and ALO R-353 to ALO VOR/DME.

NOTE: Chart not to scale.

# ROCHESTER ONE DEPARTURE

(RST1.RST) 13SEP18

MINNEAPOLIS, MINNESOTA

ANOKA COUNTY/BLAINE (JANES FLD) (A.N.E.)

NC-1, 15 MAY 2025 to 12 JUN 2025

NC-1, 15 MAY 2025 to 12 JUN 2025