

WAAS CH 72711 W13A	APP CRS 133°	Rwy Idg TDZE Apt Elev	6504 1115 1119
--	------------------------	-----------------------------	---

RNAV (GPS) RWY 13

THIEF RIVER FALLS RGNL (TVF)

⚠ Baro-VNAV and VDP NA when using Crookston altimeter setting. For uncompensated Baro-VNAV systems, LNAV/VNAV NA below -17°C (2°F) or above 54°C (130°F). DME/DME RNP-0.3 NA.

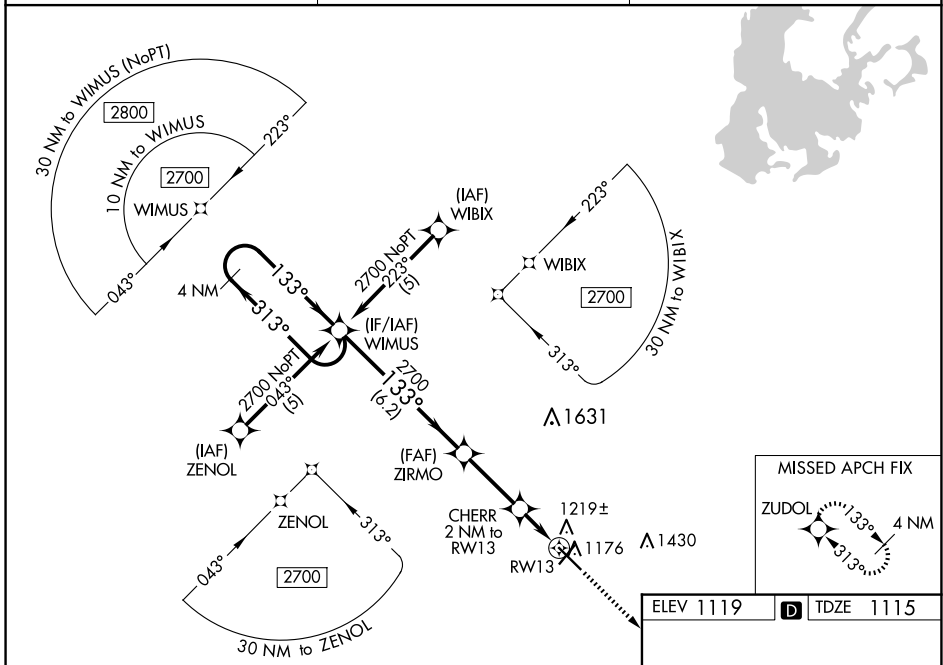
⚠ When local altimeter setting not received, use Crookston altimeter setting: increase LPV DA to 1447 feet and all visibilities $\frac{1}{8}$ SM; increase LNAV/VNAV DA to 1518 feet and all visibilities $\frac{1}{4}$ SM; increase all MDAs 100 feet and visibility Cats C and D $\frac{3}{8}$ SM.

MISSED APPROACH:
Climb to 2700 direct
ZUDOL and hold.

AWOS-3PT
119.025

MINNEAPOLIS CENTER
132.15 269.6

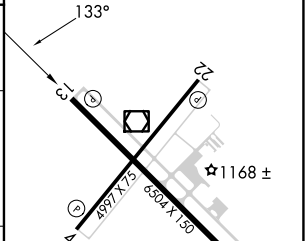
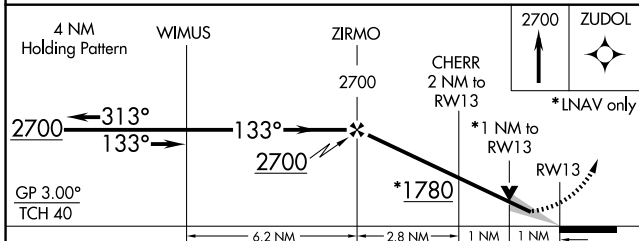
UNICOM
122.8 (CTAF) ①



NC-1, 15 MAY 2025 to 12 JUN 2025

NC-1, 15 MAY 2025 to 12 JUN 2025

ELEV 1119 **D** TDZE 1115



CATEGORY	A	B	C	D
LPV DA	1365-1		250 (300-1)	
LNAV/VNAV DA	1436-1 $\frac{1}{4}$		321 (400-1 $\frac{1}{4}$)	
LNAV MDA	1480-1		365 (400-1)	
CIRCLING	1540-1	1580-1	1820-2	1480-1 $\frac{1}{4}$
	421 (500-1)	461 (500-1)	701 (800-2)	365 (400-1 $\frac{1}{4}$)
				1980-2 $\frac{3}{4}$
				861 (900-2 $\frac{3}{4}$)

HIRL Rwy 13-31 ①
MRL Rwy 4-22 ①
REIL Rws 4, 13 and 22 ①