

NDB AIK <b>347</b>	APP CRS <b>225°</b>	Rwy Idg TDZE Apt Elev	<b>5500</b> <b>515</b> <b>529</b>
-----------------------	------------------------	-----------------------------	---

# NDB RWY 25

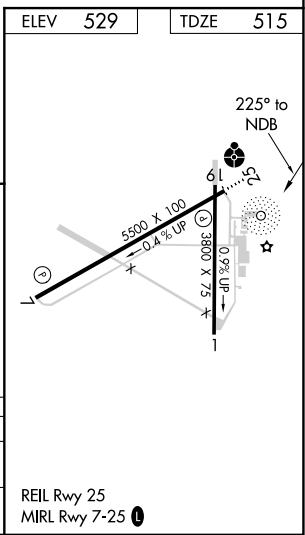
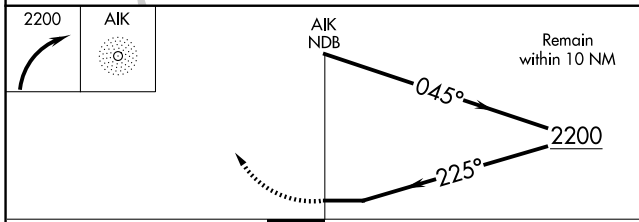
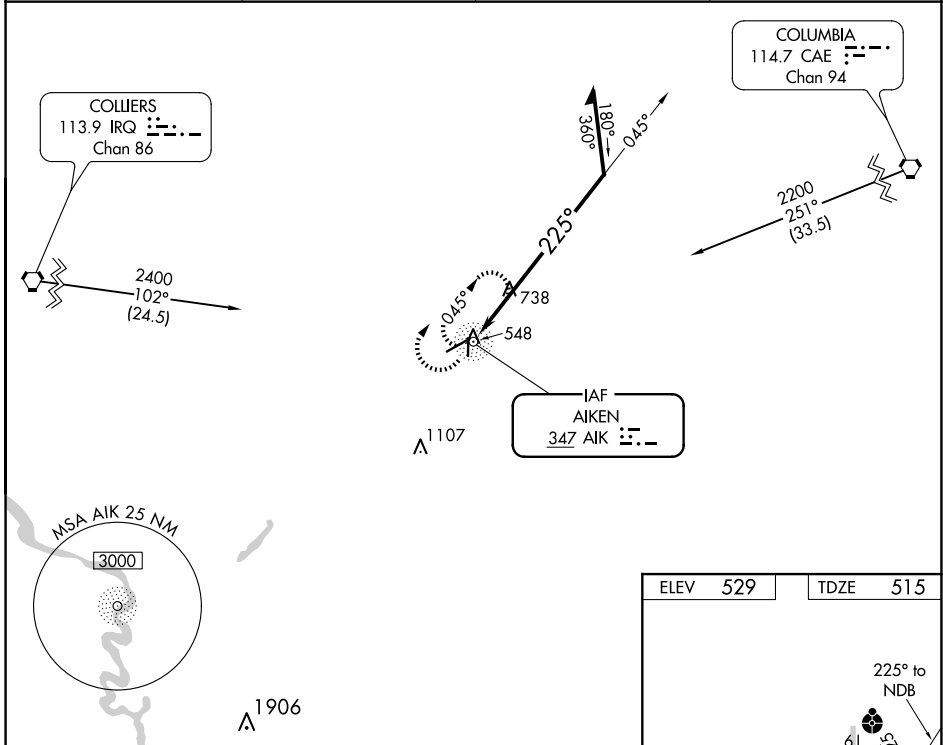
AIKEN RGNL (AIK)

**NA** When local altimeter setting not received, use Augusta Rgnl at Bush Fld altimeter setting and increase all MDAs 120 feet; increase S-25 Cats B/C/D and Circling Cat C visibility ¼ SM. For inop ODALS, increase S-25 Cat C/D visibility to 1½ mile. For inop ODALS when using Augusta Rgnl at Bush Fld altimeter setting, increase S-25 Cat C/D visibility to 2½ mile. Helicopter visibility reduction below ¾ SM NA.

**ODALS**

**MISSED APPROACH:** Climbing right turn to 2200 in AIK NDB holding pattern.

AWOS-3 <b>118.025</b>	AUGUSTA APP CON ★ <b>119.15 284.625</b>	CLNC DEL <b>126.075</b>	UNICOM <b>122.8 (CTAF) 0</b>
--------------------------	--	----------------------------	---------------------------------



CATEGORY	A	B	C	D
S-25	1180-¾	665 (700-¾)	1180-1¾	665 (700-1¾)
CIRCLING	1180-1	651 (700-1)	1180-1¾	1420-3 891 (900-3)

SE-2, 15 MAY 2025 to 12 JUN 2025

SE-2, 15 MAY 2025 to 12 JUN 2025