

WAAS CH 69231 W17A	APP CRS 174°	Rwy Idg TDZE 325 Apt Elev 325	4444
--	------------------------	---	-------------

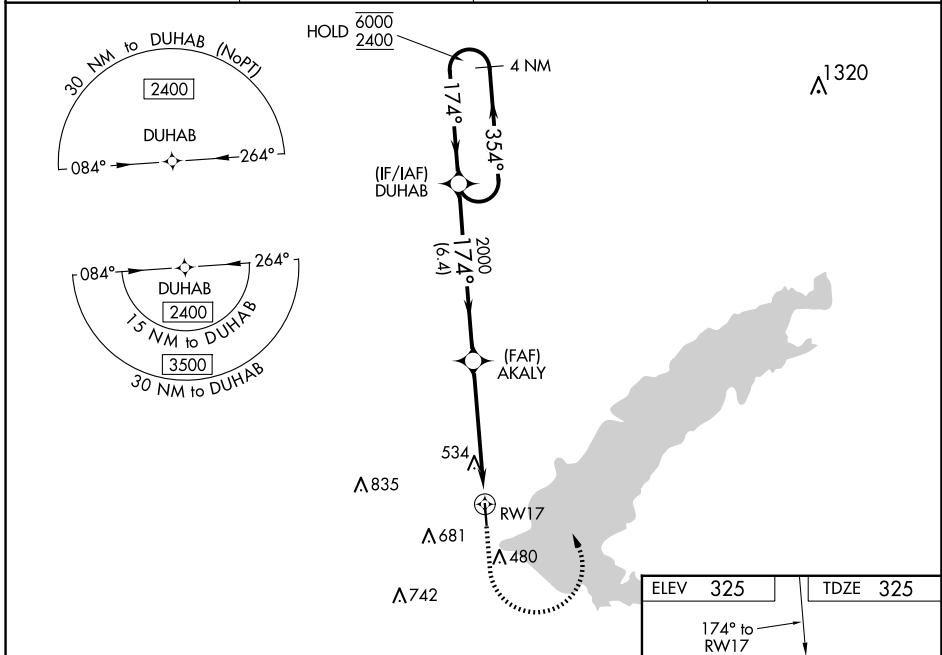
RNAV (GPS) RWY 17

BRUCE CAMPBELL FLD (MBO)

RNP APCH.
 ▽ Baro-VNAV and VDP NA when using Jackson-Medgar Wiley Evers Intl altimeter setting.
 ▲ Rwy 17 helicopter visibility reduction below $\frac{3}{4}$ SM NA. For uncompensated Baro-VNAV systems, LNAV/VNAV NA below -15°C or above 54°C. When local altimeter setting not received, use Jackson-Medgar Wiley Evers Intl altimeter setting and increase all DA 21 feet and all MDA 40 feet, and increase LNAV/VNAV visibility $\frac{1}{8}$ SM, and Circling Cats C/D visibility $\frac{1}{2}$ mile.

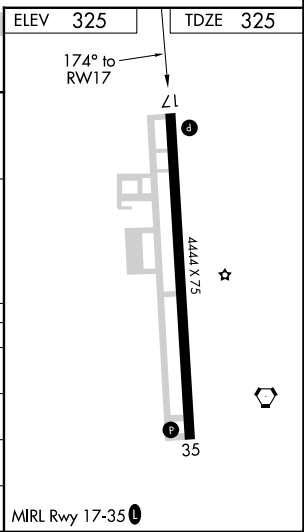
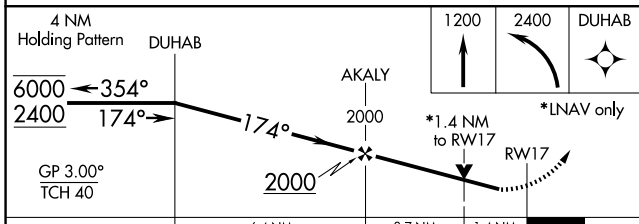
MISSED APPROACH: Climb to 1200 then climbing left turn to 2400 direct DUHAB and hold.

AWOS-3PT 119.125	JACKSON APP CON ★ 123.9 317.7	CLNC DEL 125.9	UNICOM 122.8 (CTAF) 0
----------------------------	---	--------------------------	---------------------------------



SC-4, 15 MAY 2025 to 12 JUN 2025

SC-4, 15 MAY 2025 to 12 JUN 2025



CATEGORY	A	B	C	D
LPV DA	600- $\frac{7}{8}$ 275 (300- $\frac{7}{8}$)			
LNAV/VNAV DA	832-1 $\frac{3}{8}$ 507 (600-1 $\frac{3}{8}$)			
LNAV MDA	800-1 475 (500-1)	800-1 $\frac{3}{8}$ 475 (500-1 $\frac{3}{8}$)		
CIRCLING	820-1 495 (500-1)	840-1 515 (600-1)	1040-2 715 (800-2)	1040-2 $\frac{1}{4}$ 715 (800-2 $\frac{1}{4}$)