

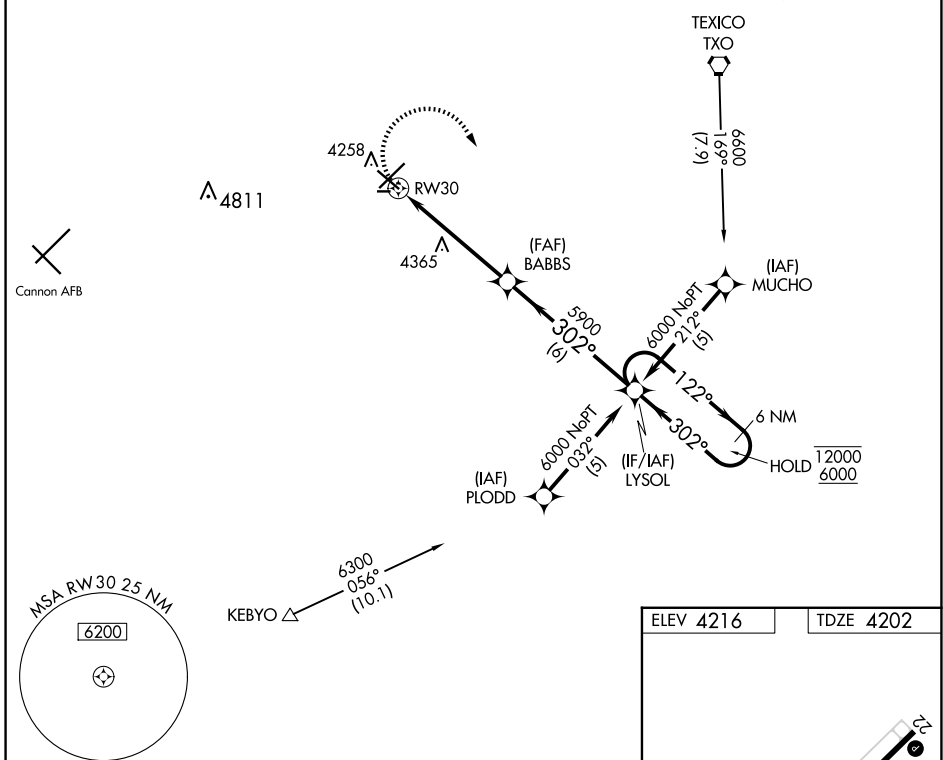
APP CRS	Rwy Idg	5697
302°	TDZE	4202
	Apt Elev	4216

RNAV (GPS) RWY 30

CLOVIS RGNL (CVN)

RNP APCH - GPS.		MISSED APPROACH: Climbing right turn to 6000 direct LYSOL and hold.	
AWOS-3PT 135.375	CANNON APP CON 118.425 352.1	CLNC DEL 119.0	UNICOM 122.8 (CTAF) ①

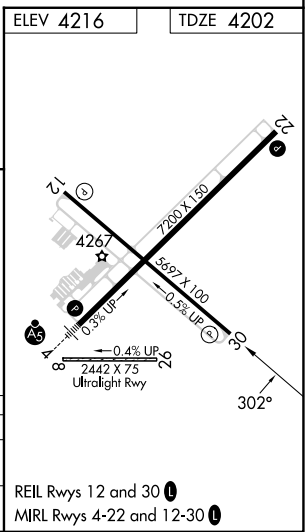
Procedure NA for arrivals at TXO VORTAC via V62 northwest bound.



SW-1, 15 MAY 2025 to 12 JUN 2025

SW-1, 15 MAY 2025 to 12 JUN 2025

6000	LYSOL	VGSI and descent angles not coincident (VGSI Angle 4.00/TCH 63)		LYSOL	6 NM Holding Pattern
CATEGORY	A	B	C	D	
RNAV MDA	4620-1	418 (500-1)	4620-1¼	418 (500-1¼)	
CIRCLING	4680-1	464 (500-1)	4700-1½	4820-2	
			484 (500-1½)	604 (700-2)	



REIL Rwy 12 and 30 ①
MIRL Rwy 4-22 and 12-30 ①