

LIMA, OHIO

AL-5143 (FAA)

23110

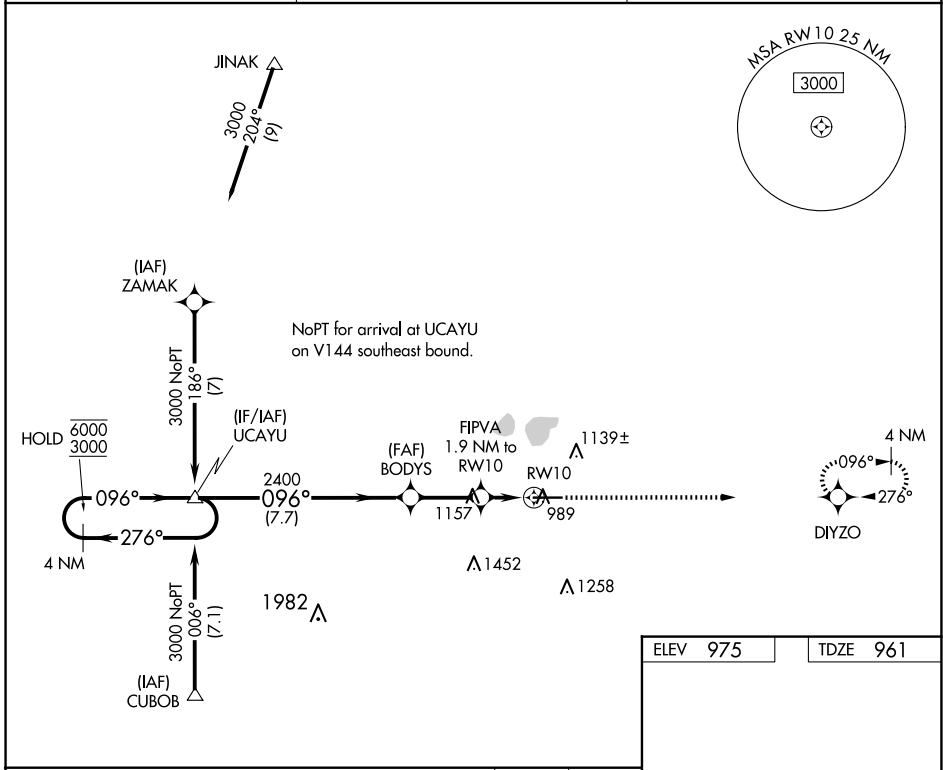
WAAS CH <b>65816</b> <b>W10A</b>	APP CRS <b>096°</b>	Rwy ldg TDZE Apt Elev	<b>6000</b> <b>961</b> <b>975</b>
--	------------------------	-----------------------------	---

# RNAV (GPS) RWY 10

LIMA ALLEN COUNTY (AOH)

RNP APCH.	Rwy 10 helicopter visibility reduction below 3/4 SM NA. For uncompensated Baro-VNAV systems, LNAV/VNAV NA below -16°C or above 54°C.	MISSED APPROACH: Climb to 3000 direct DIYZO and hold.
-----------	--	---

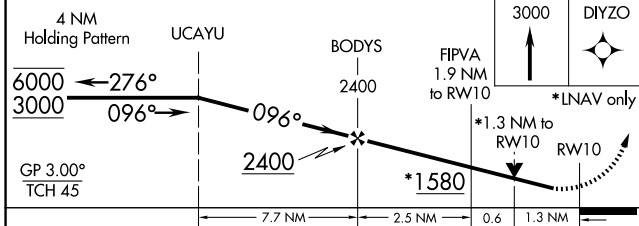
ASOS <b>128.725</b>	COLUMBUS APP CON <b>121.825 323.15</b>	UNICOM <b>122.7 (CTAF) 0</b>
------------------------	---	---------------------------------



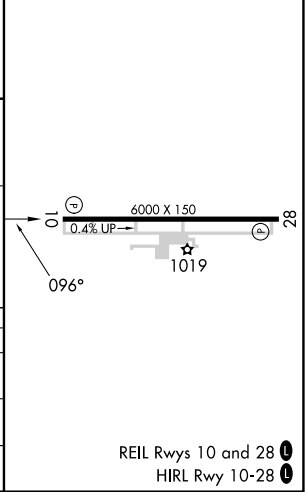
EC-2, 15 MAY 2025 to 12 JUN 2025

EC-2, 15 MAY 2025 to 12 JUN 2025

ELEV 975	TDZE 961
----------	----------



CATEGORY	A	B	C	D
LPV DA		1211-1	250 (300-1)	
LNAV/VNAV DA		1272-1	311 (300-1)	
LNAV MDA	1420-1	459 (500-1)	1420-1 3/8	459 (500-1 3/8)



LIMA, OHIO  
Amdt 1C 30JAN20

40°42'N-84°02'W

# RNAV (GPS) RWY 10

REIL Rwy 10 and 28 0  
HIRL Rwy 10-28 0