

WAAS CH 93932 W01A	APP CRS 007°	Rwy ldg TDZE Apt Elev	8001 1387 1409
--	------------------------	-----------------------------	---

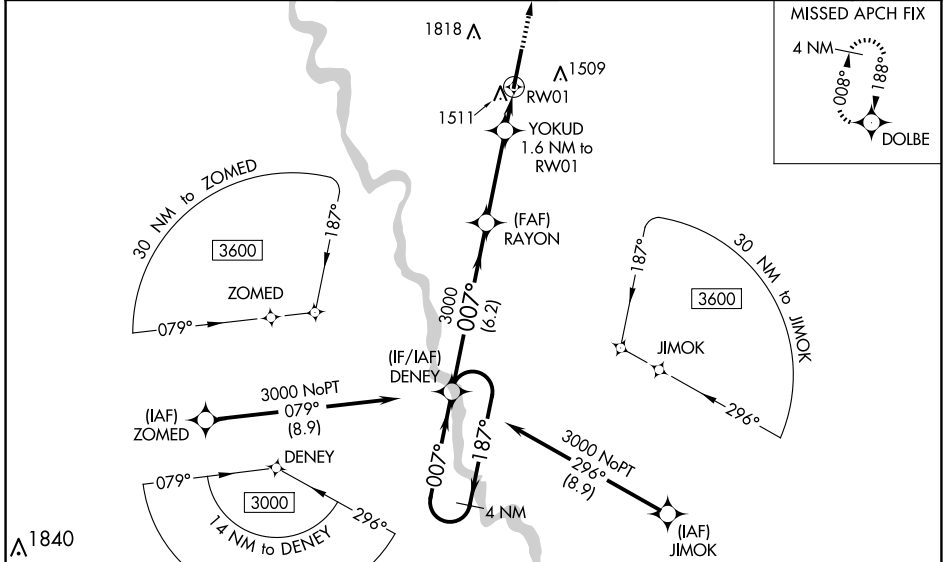
RNAV (GPS) RWY 1

BEECH FACTORY (BEC)

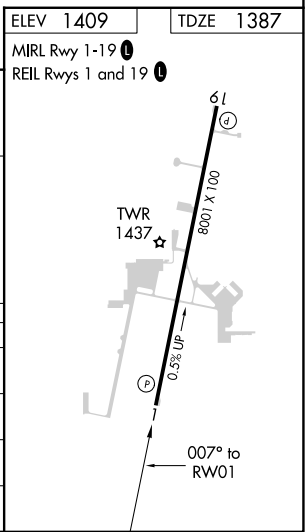
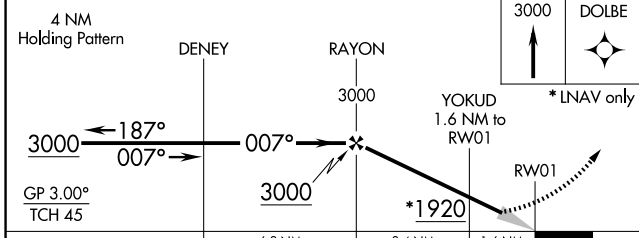
⚠ Baro-VNAV NA when using Wichita Dwight D Eisenhower Nfl altimeter setting.
⚠ NA For uncompensated Baro-VNAV systems, LNAV/VNAV NA below -17°C (2°F) or above 54°C (130°F). DME/DME RNP-0.3 NA. Obtain local altimeter setting on CTAF; when not received, use Wichita Dwight D Eisenhower Nfl altimeter setting and increase all DA 36 feet and all MDA 40 feet; increase LPV all Cats and LNAV/VNAV all Cats visibility 1/8 mile, LNAV Cat C and D and Circling Cat C and D visibility 1/4 mile.

MISSED APPROACH:
Climb to 3000 direct DOLBE and hold.

AWOS-3PT 119.45	WICHITA APP CON 134.8 269.1	BEECH TOWER ★ 126.8 (CTAF) 0 313.6	GND CON 121.7	CLNC DEL 125.0 (When tower closed)	UNICOM 122.95
---------------------------	---------------------------------------	---	-------------------------	---	-------------------------



ELEV 1409	TDZE 1387
MIRL Rwy 1-19 0	
REIL Rwys 1 and 19 0	



CATEGORY	A	B	C	D
LPV DA	1637-3/4		250 (300-3/4)	
LNAV/VNAV DA	1688-1		301 (300-1)	
LNAV MDA	1780-1 393 (400-1)		1780-1 1/8 393 (400-1 1/8)	
C CIRCLING	1820-1 411 (500-1)	2120-1 711 (800-1)	2120-2 711 (800-2)	2120-2 1/4 711 (800-2 1/4)

NC-2, 15 MAY 2025 to 12 JUN 2025

NC-2, 15 MAY 2025 to 12 JUN 2025