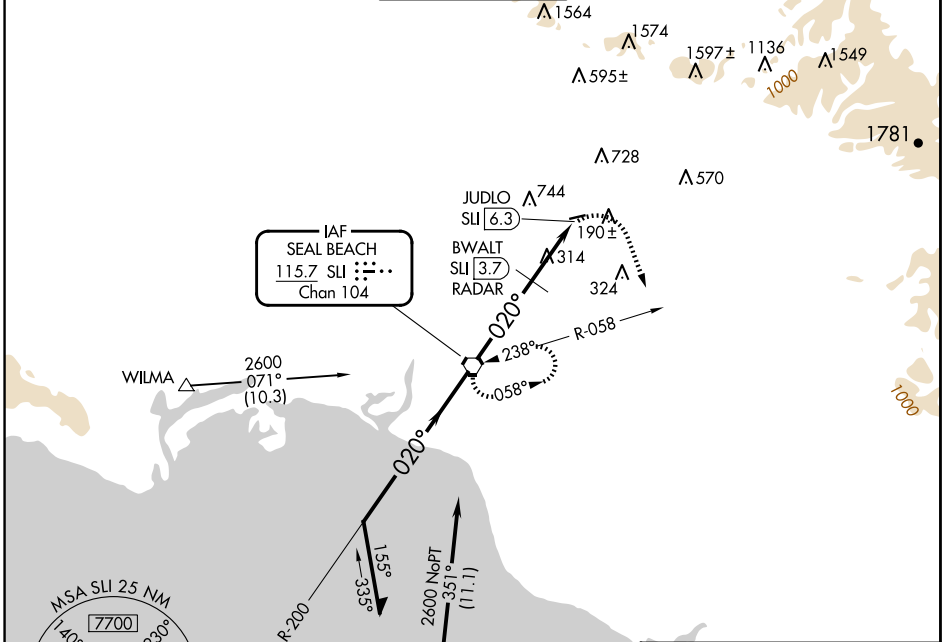


VORTAC SLI <b>115.7</b> Chan <b>104</b>	APP CRS <b>020°</b>	Rwy Idg TDZE Apt Elev	<b>N/A</b> <b>N/A</b> <b>96</b>
---	------------------------	-----------------------------	---------------------------------------

**VOR-A**  
FULLERTON MUNI (FUL)

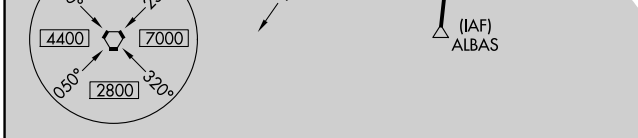
<p><b>▽</b> Maximum entry altitude 6000. <b>▲</b> Night landing: Rwy 6 NA. Helicopter visibility reduction below 1 SM NA.</p>	<p>MISSED APPROACH: Climbing right turn to 2600 via heading 145° and SLI R-058 to SLI VORTAC and hold.</p>
---	--

<p>ATIS <b>125.05</b></p>	<p>SOCAL APP CON <b>125.35 316.125</b></p>	<p>FULLERTON TOWER* <b>119.1 (CTAF) 0</b></p>	<p>GND CON <b>121.8</b></p>	<p>UNICOM <b>122.95</b></p>
-------------------------------	--	---	---------------------------------	---------------------------------

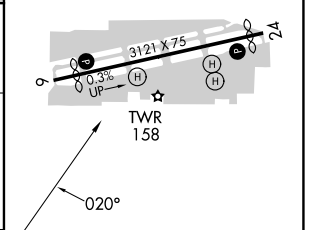
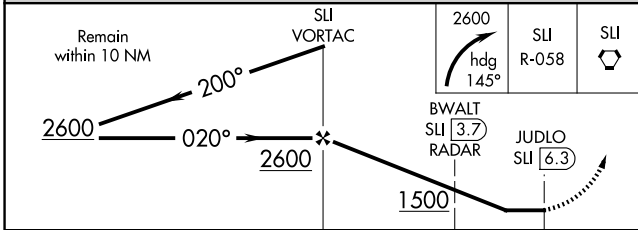


SW-3, 15 MAY 2025 to 12 JUN 2025

SW-3, 15 MAY 2025 to 12 JUN 2025



ELEV <b>96</b>
MIRL Rwy 6-24 <b>0</b>
REIL Rwys 6 and 24 <b>0</b>



CATEGORY	A	B	C	D
CIRCLING	1500-1¼ 1404 (1500-1¼)	1500-1½ 1404 (1500-1½)	NA	NA
BWALT FIX MINIMUMS				
CIRCLING	760-1 664 (700-1)	1060-1½ 964 (1000-1½)	NA	NA

FAF to MAP 6.3 NM					
Knots	60	90	120	150	180
Min:Sec	6:18	4:12	3:09	2:31	2:06