

# ANAHEIM ONE DEPARTURE

AL-5136 (FAA)

FULLERTON MUNI (F'UL)  
FULLERTON, CALIFORNIA

SW-3, 15 MAY 2025 to 12 JUN 2025

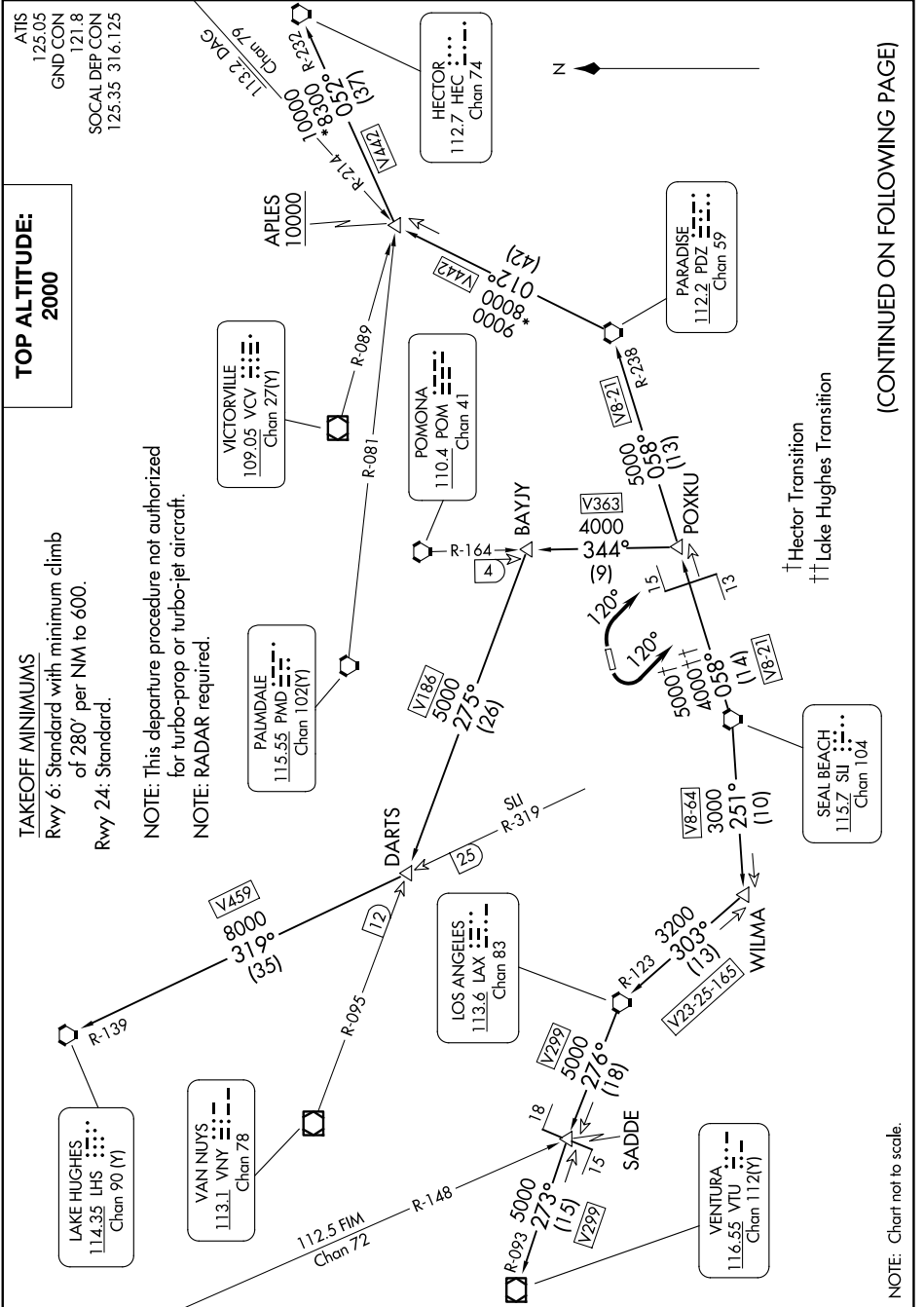
**TOP ALTITUDE:  
2000**

### TAKEOFF MINIMUMS

Rwy 6: Standard with minimum climb of 280' per NM to 600.  
Rwy 24: Standard.

NOTE: This departure procedure not authorized for turbo-prop or turbo-jet aircraft.  
NOTE: RADAR required.

ATIS 125.05  
GND CON 121.8  
SOCALDEP CON 125.35 316.125



(CONTINUED ON FOLLOWING PAGE)

SW-3, 15 MAY 2025 to 12 JUN 2025

# ANAHEIM ONE DEPARTURE

FULLERTON, CALIFORNIA  
FULLERTON MUNI (F'UL)

NOTE: Chart not to scale.