

LOC/DME I-HRO	APP CRS	Rwy Idg	6161
111.7	359°	TDZE	1351
Chan 54		Apt Elev	1365

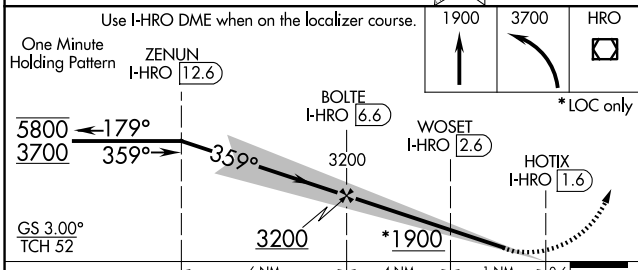
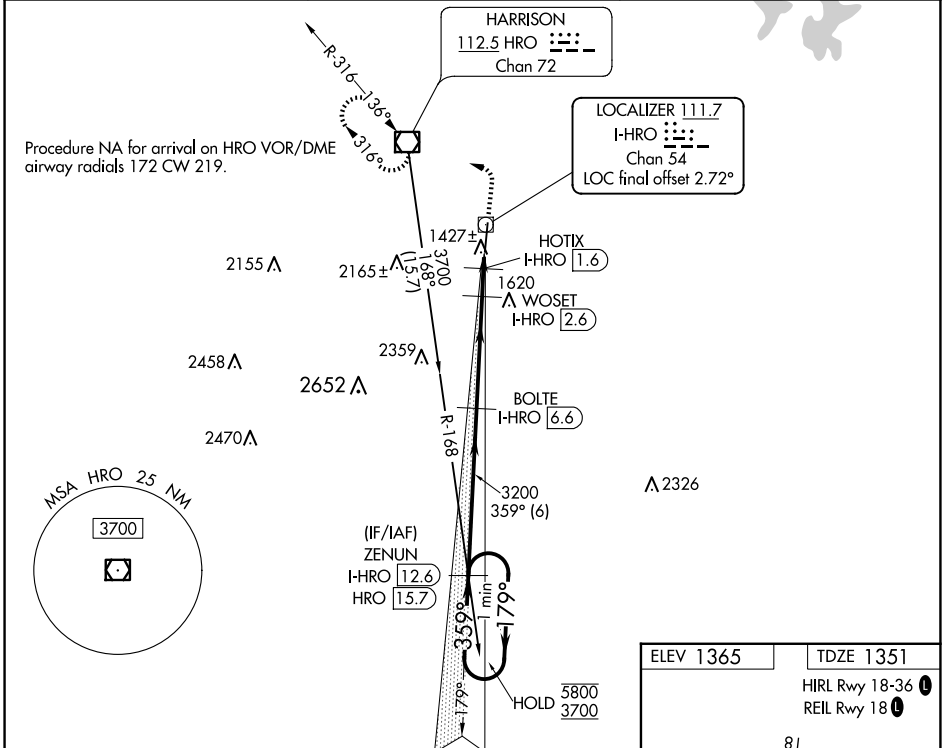
ILS or LOC RWY 36

BOONE COUNTY (HRO)

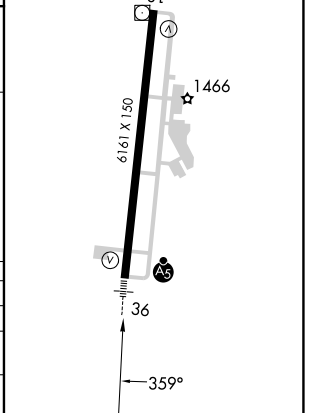
DME required for LOC only. DME or RADAR required for procedure entry.

MALS R 35
 MISSED APPROACH: Climb to 1900 then climbing left turn to 3700 direct HRO VOR/DME and hold, continue climb-in hold to 3700.

ASOS 121.125	MEMPHIS CENTER 126.85 281.55	UNICOM 123.0 (CTAF)
------------------------	--	-------------------------------



ELEV 1365	TDZE 1351
HIRL Rwy 18-36	
REIL Rwy 18	



CATEGORY	A	B	C	D
S-ILS 36		1601-½	250 (300-½)	
S-LOC 36		1680-½	329 (400-½)	
CIRCLING	1840-1 475 (500-1)	1860-1 495 (500-1)	2340-3 975 (1000-3)	2560-3 1195 (1200-3)

SC-1, 15 MAY 2025 to 12 JUN 2025

SC-1, 15 MAY 2025 to 12 JUN 2025