

SAN CLEMENTE ISLAND, CALIFORNIA

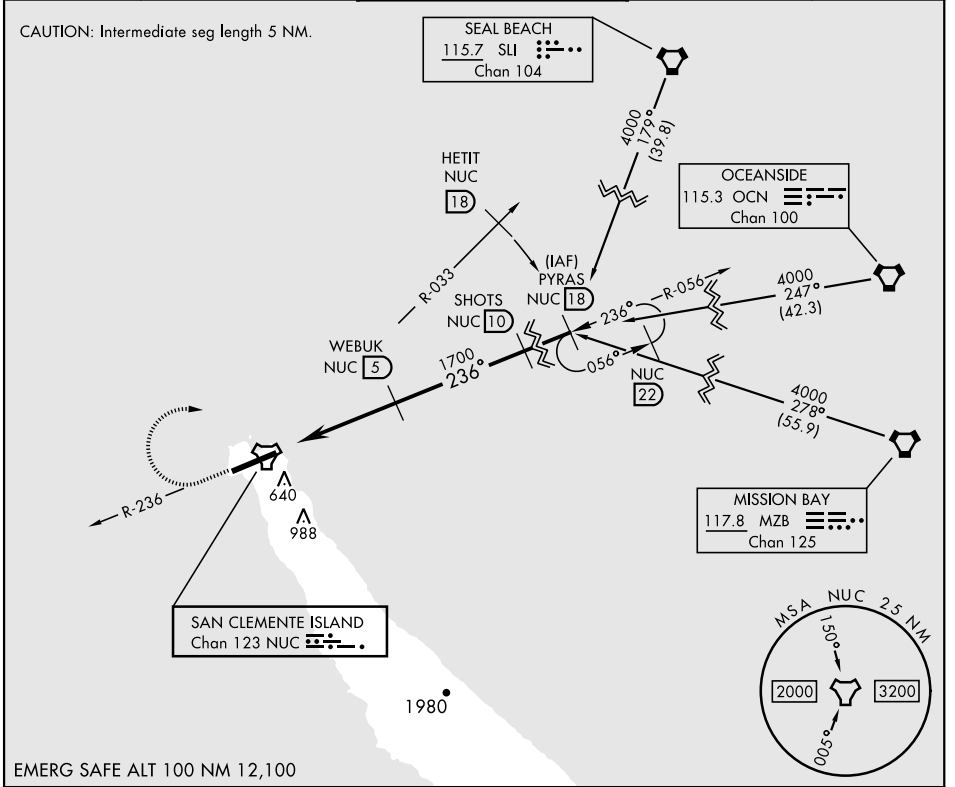
TACAN Y RWY 24

TACAN NUC Chan 123	APCH CRS 236°	Rwy ldg TDZE Arprt Elev 9301 184 184
------------------------------	-------------------------	--

[USN]
SAN CLEMENTE ISLAND NALF (FREDERICK SHERMAN FLD) (KNUC)

▽ * Circling not authorized S of Rwy 6-24.
MISSED APPROACH: Climb to 1500 via NUC TACAN R-236 then climbing right turn to 4000 via NUC R-033 to HETIT. Then arc NE of NUC TACAN via the 18 DME arc to PYRAS and hold.

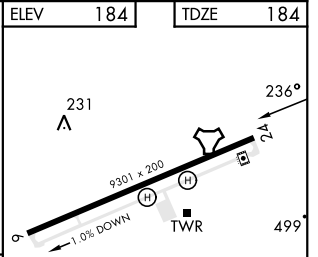
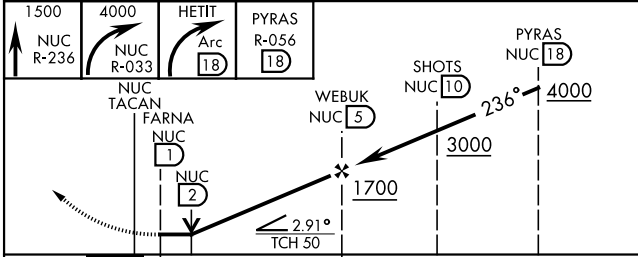
ATIS ★ 268.6	SAN CLEMENTE APP CON 127.05 292.15	SAN CLEMENTE ISLAND TOWER ★ 126.75 278.8	GND CON 0 119.55 251.05	ASR/PAR
------------------------	--	--	-----------------------------------	---------



SW-3, 15 MAY 2025 to 12 JUN 2025

SW-3, 15 MAY 2025 to 12 JUN 2025

EMERG SAFE ALT 100 NM 12,100



CATEGORY	A		B		C		D	
S-24	780-1	596 (600-1)	780-1 $\frac{3}{4}$	596 (600-1 $\frac{3}{4}$)	780-1 $\frac{3}{4}$	596 (600-1 $\frac{3}{4}$)	780-2	596 (600-2)
C CIRCLING*	780-1	596 (600-1)	780-1 $\frac{3}{4}$	596 (600-1 $\frac{3}{4}$)	780-2	596 (600-2)		

REIL Rwy 6
REIL Rwy 24 **0**
HIRL Rwy 6-24 **0**

SAN CLEMENTE ISLAND, CALIFORNIA
Orig 24FEB22

SAN CLEMENTE ISLAND NALF (FREDERICK SHERMAN FLD) (KNUC)
33°01'N-118°35'W

TACAN Y RWY 24