

SAN CLEMENTE ISLAND, CALIFORNIA

# HI-TACAN Z RWY 24

SAN CLEMENTE ISLAND NALF (FREDERICK SHERMAN FLD) (KNUC)

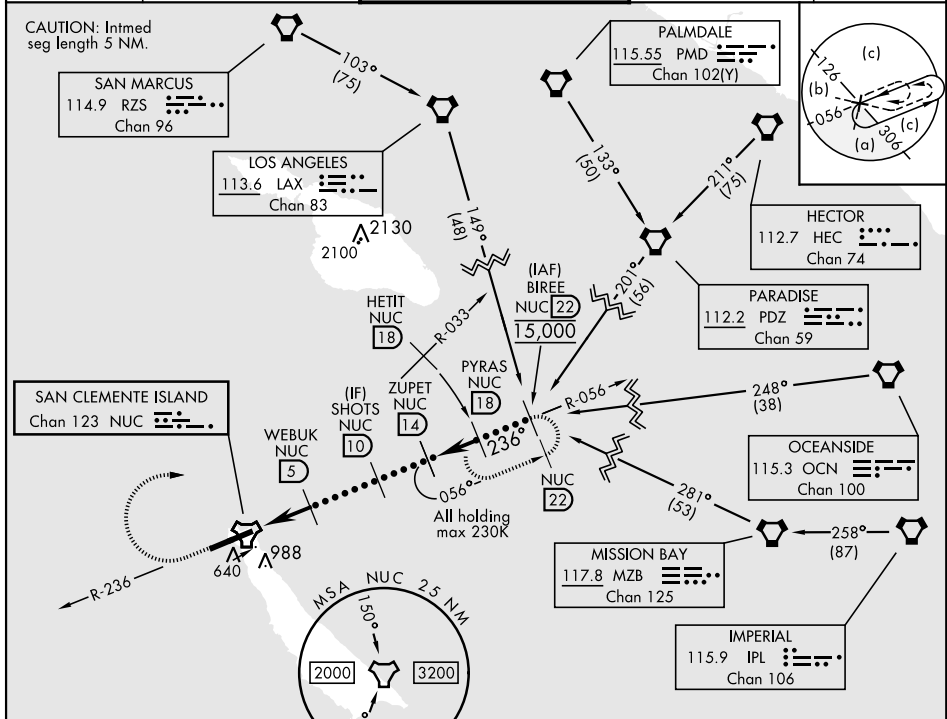
TACAN NUC Chan 123	APCH CRS 236°	Rwy Idg TDZE Arprt Elev 9301 184 184
-----------------------	------------------	-----------------------------------------------------

[UNSN]

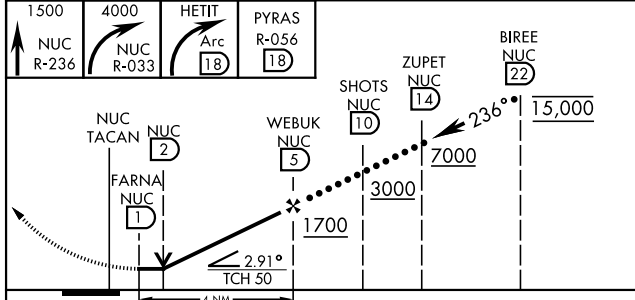
MISSED APPROACH: Climb to 1500 via NUC TACAN R-236 then climbing right turn to 4000 via NUC R-033 to HETIT. Then arc NE of the NUC TACAN via the 18 DME arc to PYRAS and hold.

\*Circling not authorized south of Rwy 6-24.

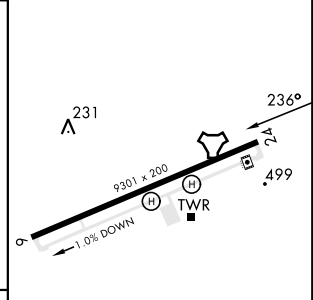
ATIS ★ 268.6	SAN CLEMENTE APP CON 127.05 292.15	SAN CLEMENTE ISLAND TOWER ★ 126.75 278.8	GND CON 119.55 251.05	ASR/PAR
-----------------	---------------------------------------	---------------------------------------------	--------------------------	---------



EMERG SAFE ALT 100 NM 12,100



ELEV	184	TDZE	184
------	-----	------	-----



CATEGORY	C	D	E
S-24	780-1 <sup>3/4</sup>	596 (600-1 <sup>3/4</sup> )	
CIRCLING*	780-1 <sup>3/4</sup> 596 (600-1 <sup>3/4</sup> )	780-2 596 (600-2)	

REIL Rwy 6  
REIL Rwy 24  
HIRL Rwy 6-24

SAN CLEMENTE ISLAND, CALIFORNIA  
Orig 24FEB22

33°01'N-118°35'W

SAN CLEMENTE ISLAND NALF (KNUC)  
(FREDERICK SHERMAN FLD)

# HI-TACAN Z RWY 24

SW-3, 15 MAY 2025 to 12 JUN 2025

SW-3, 15 MAY 2025 to 12 JUN 2025