

WAAS CH 78103 W04A	APP CRS 038°	Rwy Idg 11001 TDZE 947 Apt Elev 964
--	------------------------	--

RNAV (GPS) RWY 4

GREENVILLE SPARTANBURG INTL (GSP)

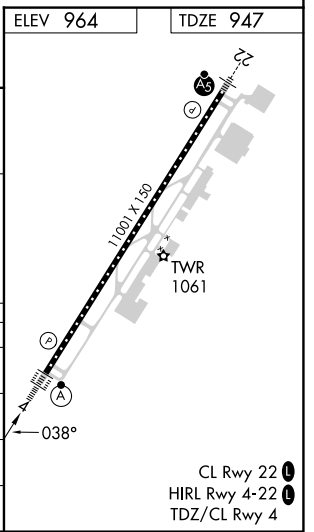
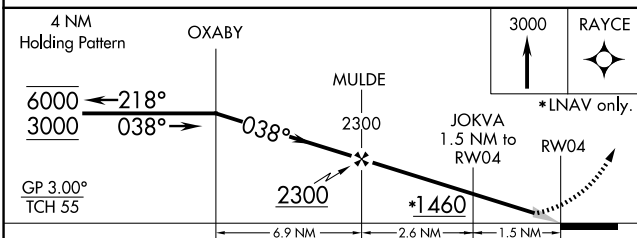
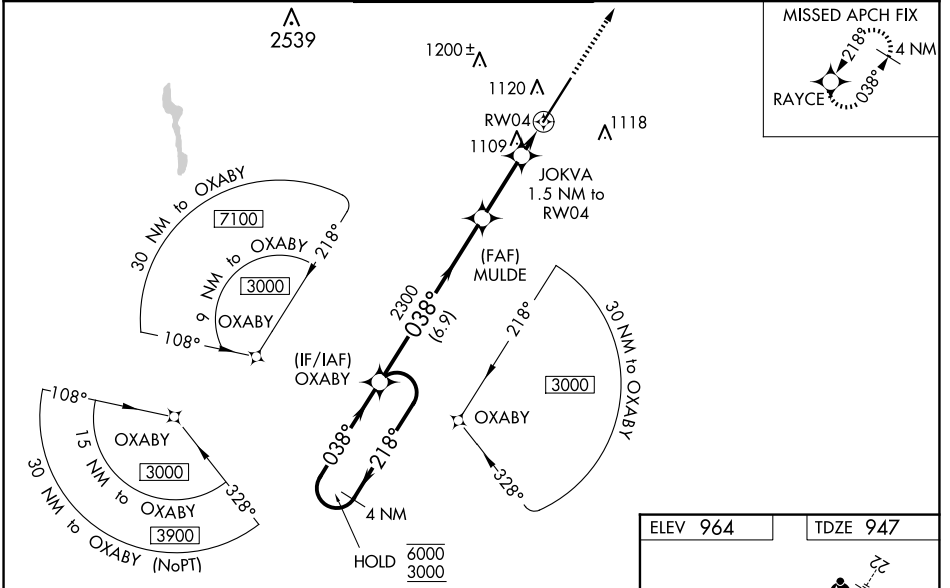
RNP APCH.

For uncompensated Baro-VNAV systems, LNAV/VNAV NA below -10°C or above 54°C. For inop ALS, increase LNAV/VNAV all Cats visibility to 1 3/8 SM and increase LNAV Cat C/D visibility to RVR 6000. When local altimeter setting not received, use Greenville Downtown altimeter setting; increase LPV DA to 1176 feet and LNAV/VNAV DA to 1450 feet and all Cats visibility to RVR 5500; increase all MDAs 40 feet and visibility LNAV Cats C and D to RVR 4500 and Circling Cat D visibility 1/4 SM. For inop ALS, when using Greenville Downtown altimeter setting, increase LNAV/VNAV all Cats visibility to 1 3/8 SM. Baro-VNAV NA when using Greenville Downtown altimeter setting.

ALSF-2

MISSED APPROACH:
Climb to 3000 direct
RAYCE and hold.

ATIS 134.25	GREER APP CON* 118.8 270.275	GREER TOWER* 120.1 (CTAF) 251.15	GND CON 121.9	CLNC DEL 121.9	UNICOM 122.95
-----------------------	--	--	-------------------------	--------------------------	-------------------------



CATEGORY	A	B	C	D
LPV DA		1147/18	200 (200-1/2)	
LNAV/VNAV DA		1421/50	474 (500-1)	
LNAV MDA	1360/24	413 (400-1/2)	1360/40	413 (400-3/4)
CIRCLING	1440-1	476 (500-1)	1480-1 1/2 516 (600-1 1/2)	1700-2 1/4 736 (800-2 1/4)

SE-2, 15 MAY 2025 to 12 JUN 2025

SE-2, 15 MAY 2025 to 12 JUN 2025