

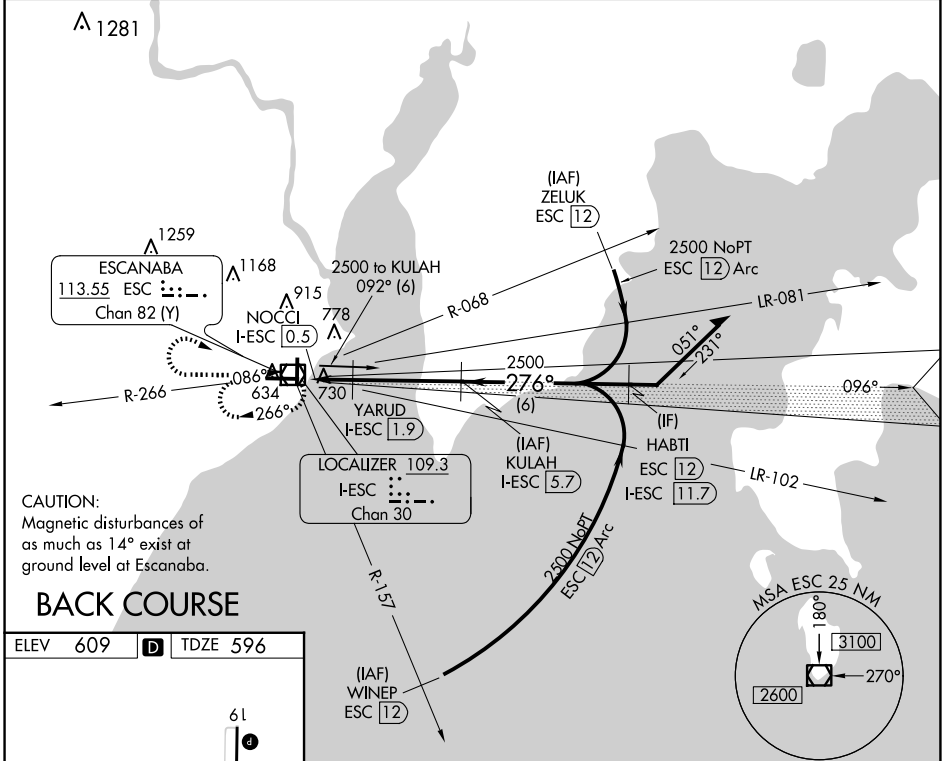
LOC/DME I-ESC 109.3 Chan 30	APP CRS 276°	Rwy Idg TDZE Apt Elev	6498 596 609
--	------------------------	-----------------------------	---

LOC BC RWY 28

DELTA COUNTY (ESC)

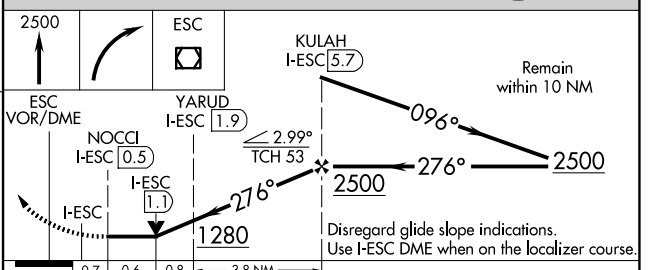
DME required.	MISSED APPROACH: Climb to 2500 then right turn direct ESC VOR/DME and hold.
<p>▼ Rwy 28 helicopter visibility reduction below 3/4 SM NA.</p>	

AWOS-3PT 121.425	MINNEAPOLIS CENTER 127.65	UNICOM 122.8 (CTAF) 0
----------------------------	-------------------------------------	---------------------------------



ELEV 609 **D** TDZE 596

HIRL Rwy 10-28 **1**
MIRL Rwy 1-19 **1**
REIL Rws 1 and 28 **1**



CATEGORY	A	B	C	D
S-28	1040-1 444 (500-1)		1040-1 3/8 444 (500-1 3/8)	
C CIRCLING	1060-1 451 (500-1)	1080-1 471 (500-1)	1280-2 671 (700-2)	1480-2 3/4 871 (900-2 3/4)

EC-1, 15 MAY 2025 to 12 JUN 2025

EC-1, 15 MAY 2025 to 12 JUN 2025