

WAAS CH 69204 W33A	APP CRS 336°	Rwy Idg TDZE 4316 Apt Elev 4317
--	------------------------	---

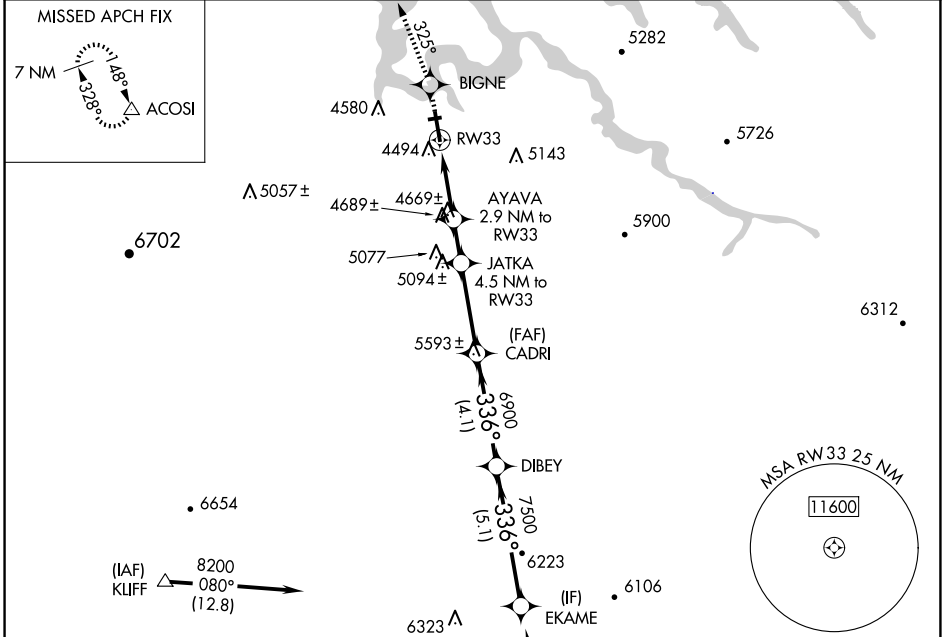
RNAV (GPS) RWY 33

PAGE MUNI (PGA)

▽ For uncompensated Baro-VNAV systems, LNAV/VNAV NA below -23°C (-9°F) or above 41°C (105°F).
DME/DME RNP-0.3 NA. Circling NA to Rwy 7-25.

MISSED APPROACH: Climb to 8500 direct BIGNE and via 325° track to ACOSI and hold, continue climb-in-hold to 8500.

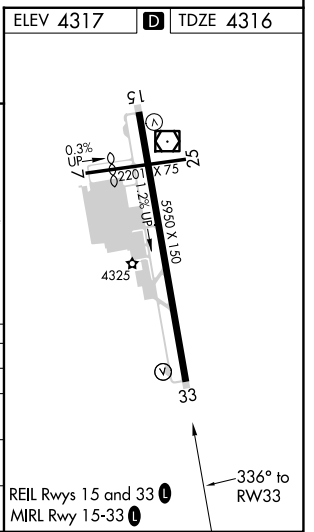
ASOS 120.625	DENVER CENTER 127.55 256.875	UNICOM 122.8 (CTAF)
------------------------	--	-------------------------------



Procedure NA for arrivals at CELAY via V208 southbound.

ELEV 4317 **D** TDZE 4316

8500	BIGNE	ACOSI	VGSI and RNAV glidepath not coincident (VGSI Angle 3.00/TCH 30).			EKAME	
↑	325° tr	△	JATKA	CADRI	DIBEY	8200	
*LNAV only.		AYAVA	JATKA			Procedure Turn NA GP 3.00° TCH 50	
*1.8 NM to RW33		2.9 NM to RW33	4.5 NM to RW33				
		5280	5800	6900	7500		
		1.8 NM	1.1 NM	1.6 NM	3.3 NM	4.1 NM	5.1 NM
CATEGORY		A	B	C	D		
LPV DA		4566-1			250 (300-1)		
LNAV/VNAV DA		4744-1½			428 (500-1½)		
LNAV MDA		4920-1	604 (700-1)	4920-1¾	604 (700-1¾)	4920-2	604 (700-2)
CIRCLING		4920-1	603 (700-1)	5080-2¼	763 (800-2¼)	5360-3	1043 (1100-3)



SW-4, 15 MAY 2025 to 12 JUN 2025

SW-4, 15 MAY 2025 to 12 JUN 2025