

| | | | |
|--|------------------------|-----------------------------|---|
| WAAS CH 61212 W13A | APP CRS 129° | Rwy Idg TDZE Apt Elev | 5500 2020 2032 |
|--|------------------------|-----------------------------|---|

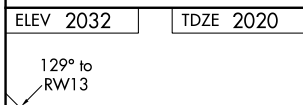
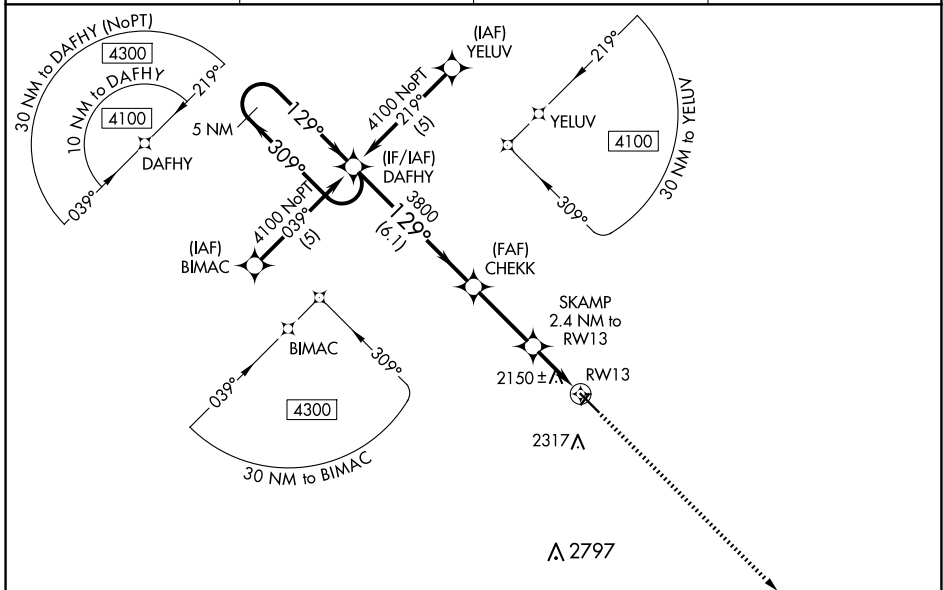
RNAV (GPS) RWY 13

WINNER RGNL (ICR)

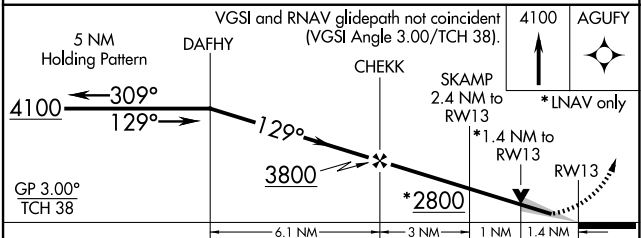
⚠ DME/DME RNP-0.3 NA. For uncompensated Baro-VNAV systems, LNAV/VNAV NA below -19°C (-2°F) or above 54°C (130°F). Baro-VNAV and VDP NA when using Valentine altimeter setting. When local altimeter setting not received, use Valentine, NE altimeter setting and increase all DA/MDA 240 feet; increase LPV all Cats visibility ¾ mile, LNAV/VNAV all Cats visibility 1 mile, LNAV Cat C visibility ¾ mile, Circling Cat B visibility ¼ mile and Cat C visibility 1 mile. Circling NA to Rwy's 3 and 21.

MISSED APPROACH: Climb to 4100 direct AGUFY and hold.

| | | | |
|------------------------|--|-----------------------|---------------------------------|
| ASOS 126.775 | MINNEAPOLIS CENTER 125.1 269.1 | GCO 121.725 | UNICOM 122.8 (CTAF) 0 |
|------------------------|--|-----------------------|---------------------------------|



| | |
|------------------|-----------|
| ELEV 2032 | TDZE 2020 |
| MIRL Rwy 13-31 0 | |



| CATEGORY | A | B | C | D |
|-------------------|-----------------------|-----------------------|-------------------------|----|
| LPV DA | | 2270-1 | 250 (300-1) | NA |
| LNAV/VNAV DA | | 2456-1½ | 436 (500-1½) | NA |
| LNAV MDA | 2480-1 | 460 (500-1) | 2480-1¼ 460 (500-1¼) | NA |
| C CIRCLING | 2580-1 548 (600-1) | 2680-1 648 (700-1) | 2680-1¾ 648 (700-1¾) | NA |

NC-1, 15 MAY 2025 to 12 JUN 2025

NC-1, 15 MAY 2025 to 12 JUN 2025