

WAAS CH 45531 W02A	APP CRS 015°	Rwy Idg 6451 TDZE 751 Apt Elev 759
--	------------------------	--

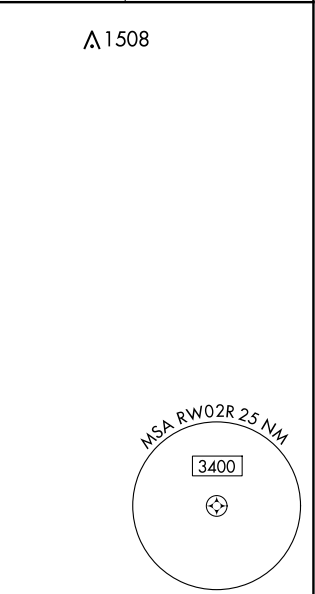
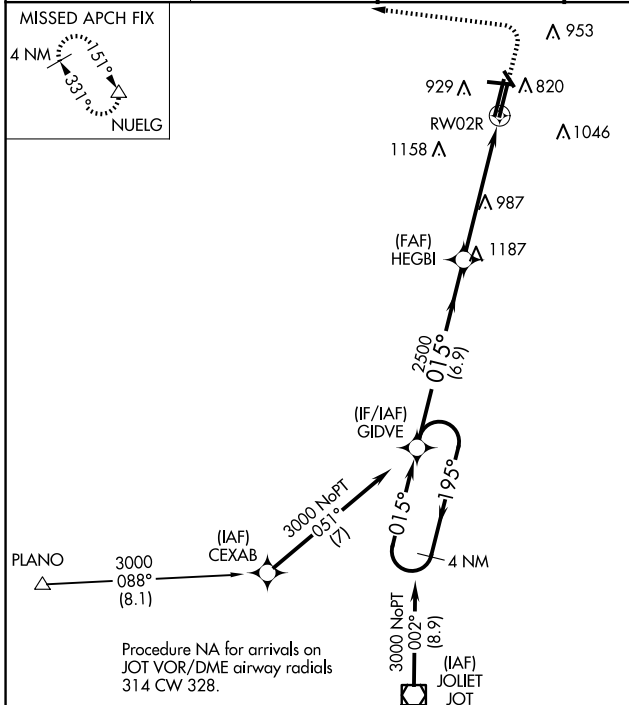
RNAV (GPS) RWY 2R

DUPAGE (DPA)

⚠ For uncompensated Baro-VNAV systems, LNAV/VNAV NA below -16°C (4°F) or above 54°C (130°F). DME/DME RNP-0.3 NA. When local altimeter setting not received, use Aurora altimeter setting: increase LPV DA to 1038 feet, LNAV/VNAV DA to 1148 feet and visibility LNAV/VNAV all Cats ¼ SM; increase all MDA 40 feet and visibility LNAV Cat C/D visibility ⅓ SM and Circling Cat C/D ¼ SM. VDP and Baro-VNAV NA when using Aurora altimeter setting. Circling Rwy 15, 28, 33 NA at night.

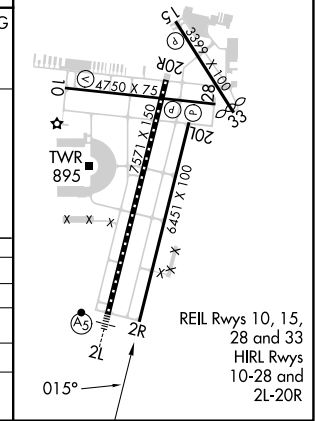
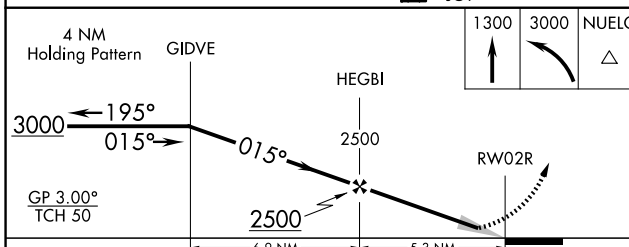
MISSED APPROACH:
Climb to 1300 then climbing left turn to 3000 direct NUELG and hold.

ATIS 132.075	CHICAGO APP CON 133.5 349.0	DUPAGE TOWER 120.9 257.8	GND CON 121.8	CLNC DEL 119.75
------------------------	---------------------------------------	------------------------------------	-------------------------	---------------------------



ELEV 759	TDZE 751
----------	----------

MIRL Rwy 15-33 and 2R-20L
 TDZ/CL Rwy 2L
 RLLS Rwy 10



CATEGORY	A	B	C	D
LPV DA		1001-1	250 (300-1)	
LNAV/VNAV DA		1111-1 ⅓	360 (400-1 ⅓)	
LNAV MDA	1240-1	489 (500-1)	1240-1 ⅓	489 (500-1 ⅓)
CIRCLING	1260-1 501 (600-1)	1360-1 601 (700-1)	1460-2 701 (800-2)	1460-2 ¼ 701 (800-2 ¼)

EC-3, 15 MAY 2025 to 12 JUN 2025

EC-3, 15 MAY 2025 to 12 JUN 2025