

(BLOKR7.BLOKR) 24305

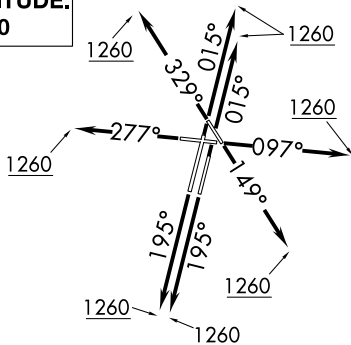
AL-5104 (FAA)

BLOKR SEVEN DEPARTURE (RNAV)

DUPAGE (DPA)
CHICAGO/WEST CHICAGO, ILLINOIS

CHICAGO DEP CON
133.5 349.0
ATIS
132.075
GND CON
121.8
DUPAGE TOWER
120.9 257.8

**TOP ALTITUDE:
3000**



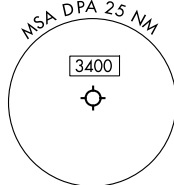
TAKEOFF MINIMUMS:

Rwys 2L/R, 10, 20L/R, 28, 33: Standard.

Rwy 15: 300-1 $\frac{1}{2}$ or standard with minimum climb of 205' per NM to 1000.

NOTE: Turbojet departures maintain 250K until advised by ATC.

NOTE: ROBERTS TRANSITION: For aircraft inbound to CMI or STL, or as assigned by ATC.



RNAV 1 - DME/DME/IRU or GPS.
RADAR required. RADAR required for non-GPS equipped aircraft.

DEPARTURE ROUTE DESCRIPTION

TAKEOFF RUNWAYS 2L/R: Climb on heading 015° to 1260, then as assigned by ATC, for vectors to BACEN, thence. . . .

TAKEOFF RUNWAY 10: Climb on heading 097° to 1260, then as assigned by ATC, for vectors to BACEN, thence. . . .

TAKEOFF RUNWAY 15: Climb on heading 149° to 1260, then as assigned by ATC, for vectors to BACEN, thence. . . .

TAKEOFF RUNWAYS 20L/R: Climb on heading 195° to 1260, then as assigned by ATC, for vectors to BACEN, thence. . . .

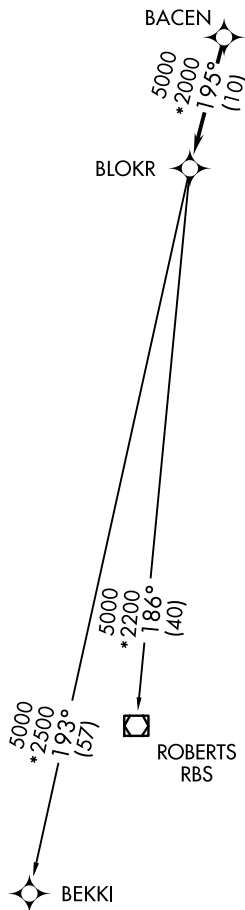
TAKEOFF RUNWAY 28: Climb on heading 277° to 1260, then as assigned by ATC, for vectors to BACEN, thence. . . .

TAKEOFF RUNWAY 33: Climb on heading 329° to 1260, then as assigned by ATC, for vectors to BACEN, thence. . . .

. . . .on track 195° to BLOKR, then on (transition). Maintain 3000. Expect filed altitude 10 minutes after departure.

BEKKI TRANSITION (BLOKR7.BEKKI):

ROBERTS TRANSITION (BLOKR7.RBS):



NOTE: Chart not to scale.

BLOKR SEVEN DEPARTURE (RNAV)

(BLOKR7.BLOKR) 31OCT24

CHICAGO/WEST CHICAGO, ILLINOIS
DUPAGE (DPA)

EC-3, 15 MAY 2025 to 12 JUN 2025

EC-3, 15 MAY 2025 to 12 JUN 2025