

NC-1, 15 MAY 2025 to 12 JUN 2025

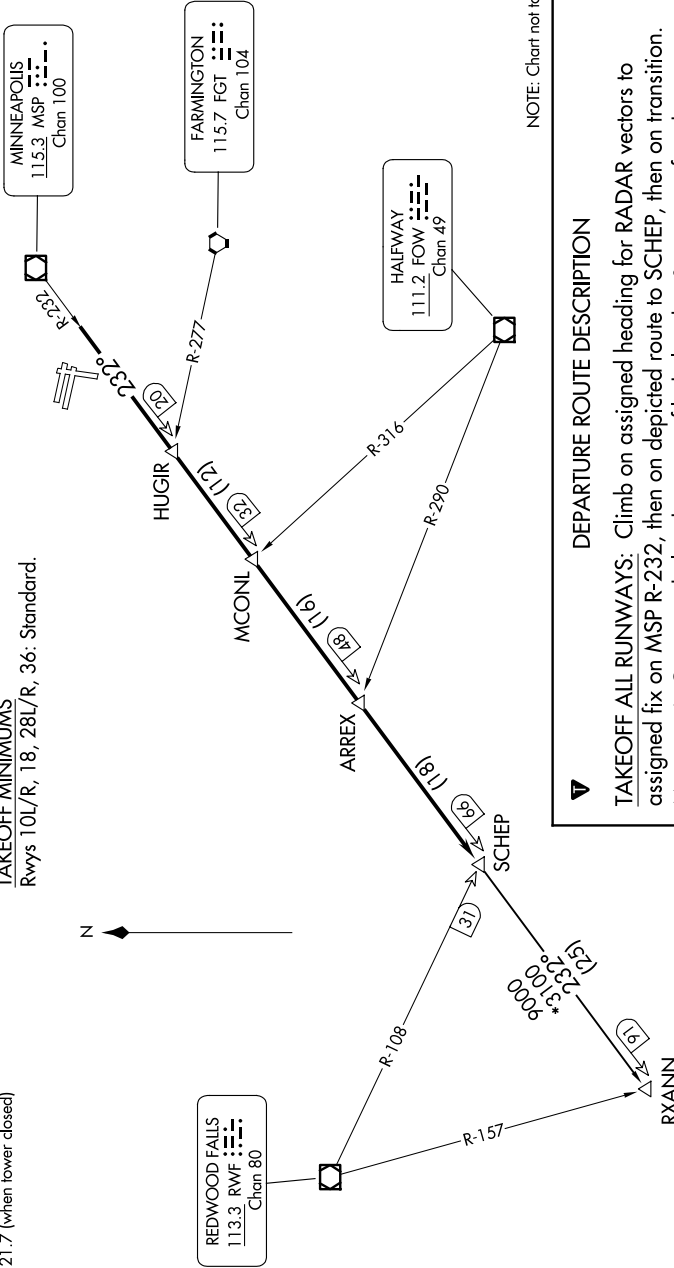
MINNEAPOLIS DEP CON  
134.7 284.7  
ATIS  
124.9  
MINNEAPOLIS CLNC DEL  
121.7 (when lower closed)

RADAR required.

**TOP ALTITUDE:  
ASSIGNED BY ATC**

TAKEOFF MINIMUMS

Rwys 10L/R, 18, 28L/R, 36: Standard.



### DEPARTURE ROUTE DESCRIPTION

**TAKEOFF ALL RUNWAYS:** Climb on assigned heading for RADAR vectors to assigned fix on MSP R-232, then on depicted route to SCHEP, then on transition. Maintain ATC assigned altitude. Expect filed altitude 10 minutes after departure.

**RXANN TRANSITION (SCHEP1.RXANN):** From over SCHEP INT on MSP R-232 to RXANN INT.

NC-1, 15 MAY 2025 to 12 JUN 2025