

(ORSKY3.ORSKY) 23334
ORSKY THREE DEPARTURE

AL-5094 (FAA)

FLYING CLOUD (FCM)
 MINNEAPOLIS, MINNESOTA

MINNEAPOLIS DEP CON
 134.7 284.7
 ATIS
 124.9
 MINNEAPOLIS CLNC DEL
 121.7 (when tower closed)
 FLYING CLOUD TOWER ★
 119.15

RADAR required.

**TOP ALTITUDE:
 ASSIGNED BY ATC**

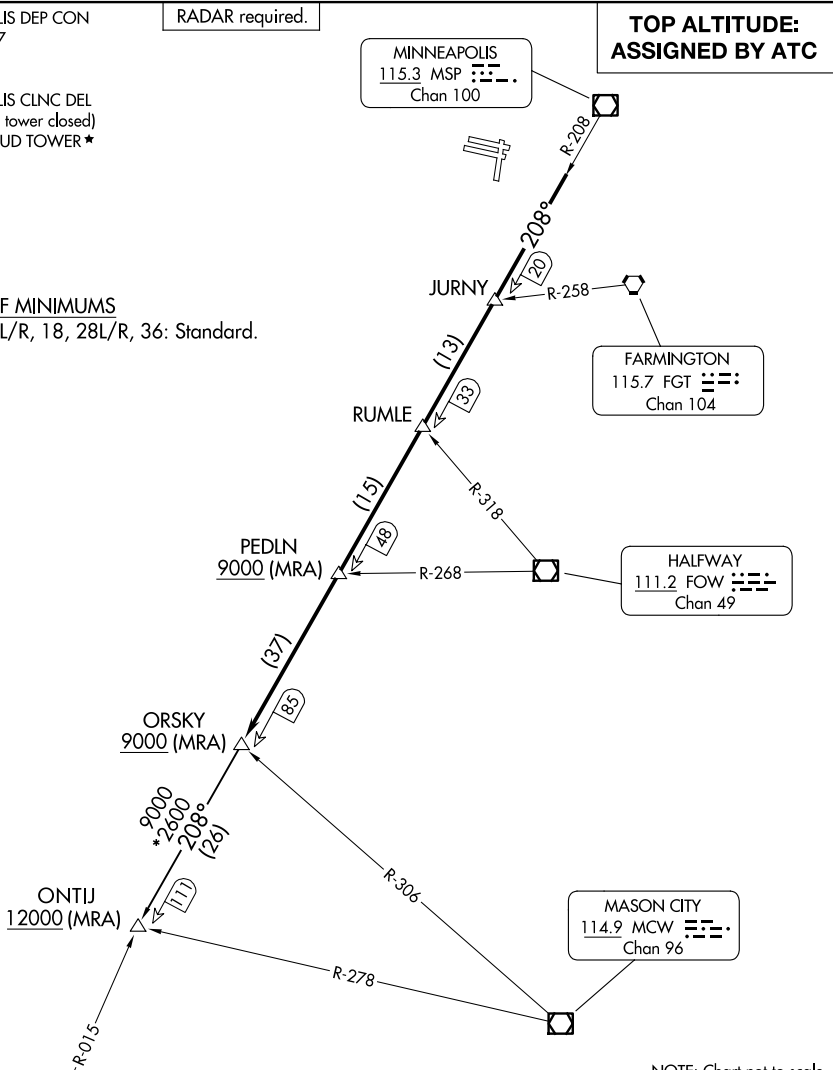
MINNEAPOLIS
 115.3 MSP
 Chan 100

FARMINGTON
 115.7 FGT
 Chan 104

HALFWAY
 111.2 FOW
 Chan 49

MASON CITY
 114.9 MCW
 Chan 96

TAKEOFF MINIMUMS
 Rwys 10L/R, 18, 28L/R, 36: Standard.



NOTE: Chart not to scale.

DEPARTURE ROUTE DESCRIPTION

TAKEOFF ALL RUNWAYS: Climb on assigned heading for RADAR vectors to assigned fix on MSP R-208, then on depicted route to ORSKY, then on transition. Maintain ATC assigned altitude. Expect filed altitude 10 minutes after departure.

ONTIJ TRANSITION (ORSKY3.ONTIJ): From over ORSKY INT on MSP R-208 to ONTIJ INT.

ORSKY THREE DEPARTURE
 (ORSKY3.ORSKY) 08SEP22

MINNEAPOLIS, MINNESOTA
 FLYING CLOUD (FCM)

NC-1, 15 MAY 2025 to 12 JUN 2025

NC-1, 15 MAY 2025 to 12 JUN 2025