

VOR/DME RHI 115.05 Chan 97(Y)	APP CRS 281°	Rwy Idg TDZE 1606 Apt Elev 1624	6799
---	------------------------	---	-------------

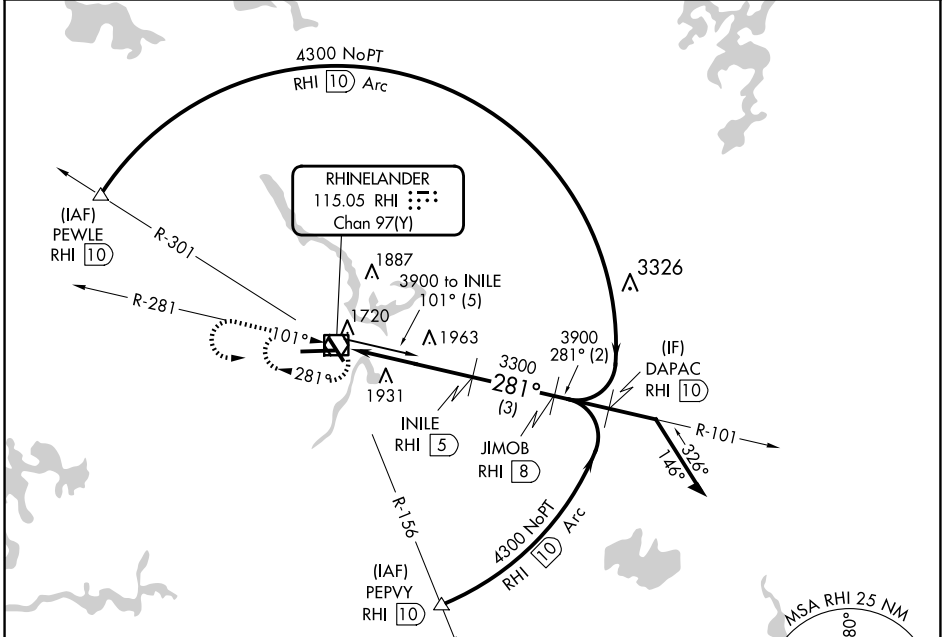
VOR/DME RWY 27

RHINELANDER/ONEIDA COUNTY (RHI)

When local altimeter setting not received, use Tomhawk altimeter setting and increase all MDA 60 feet and Cat C/D visibility ¼ mile.

MISSED APPROACH: Climb to 3900 then left turn direct RHI VOR/DME and hold.

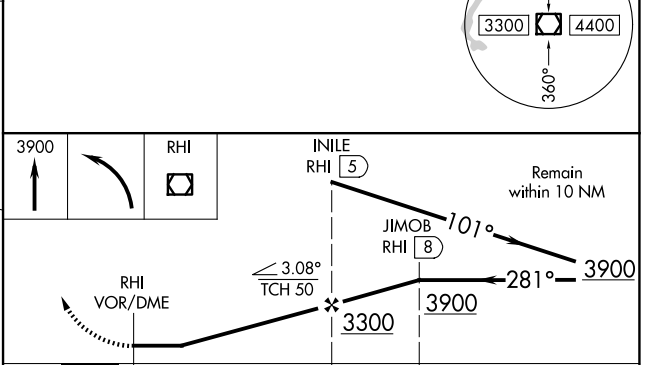
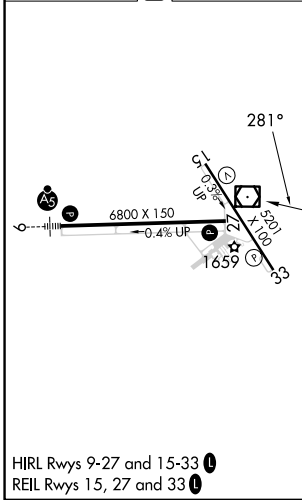
ASOS 126.825	MINNEAPOLIS CENTER 133.65 281.5	UNICOM 123.0 (CTAF)
------------------------	---	-------------------------------



EC-3, 15 MAY 2025 to 12 JUN 2025

EC-3, 15 MAY 2025 to 12 JUN 2025

ELEV 1624	D	TDZE 1606
-----------	----------	-----------



CATEGORY	A	B	C	D
S-27	2220-1	614 (600-1)	2220-1¾	614 (600-1¾)
CIRCLING	2220-1 596 (600-1)	2260-1 636 (700-1)	2260-1¾ 636 (700-1¾)	2280-2 656 (700-2)