

|  |                        |   |             |
|--|------------------------|---|-------------|
| WAAS<br>CH <b>50217</b><br><b>W27A</b> | APP CRS<br><b>271°</b> | Rwy Idg<br>TDZE <b>1605</b><br>Apt Elev <b>1623</b> | <b>6799</b> |
|--|------------------------|---|-------------|

# RNAV (GPS) RWY 27

RHINELANDER/ONEIDA COUNTY (RHI)

RNP APCH - GPS.

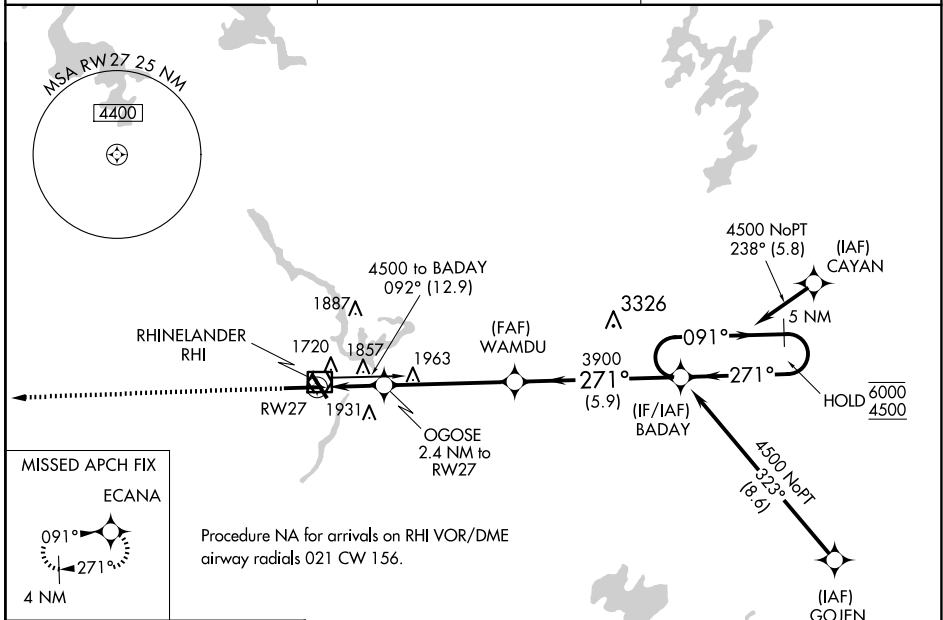
MISSED APPROACH: Climb to 4000 direct ECANA and hold.

▼ For uncompensated Baro-VNAV systems, LNAV/VNAV  
▲ NA below -22°C or above 54°C.

ASOS  
**126.825**

MINNEAPOLIS CENTER  
**133.65 281.5**

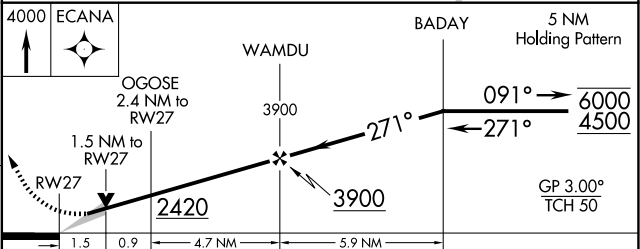
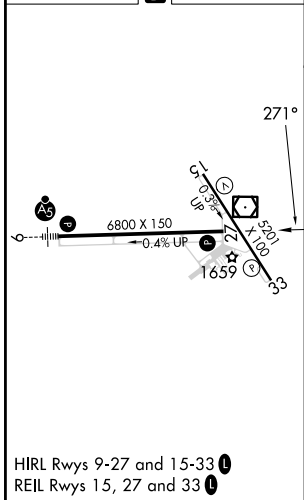
UNICOM  
**123.0 (CTAF) 0**



EC-3, 15 MAY 2025 to 12 JUN 2025

EC-3, 15 MAY 2025 to 12 JUN 2025

ELEV 1623 **D** TDZE 1605



| CATEGORY     | A                     | B                                 | C  | D  |
|--------------|-----------------------|-----------------------------------|--|--|
| LPV DA       |                       | 1805- <sup>3</sup> / <sub>4</sub> | 200 (200- <sup>3</sup> / <sub>4</sub> )  |  |
| LNAV/VNAV DA |                       | 1920- <sup>7</sup> / <sub>8</sub> | 315 (300- <sup>7</sup> / <sub>8</sub> )  |  |
| LNAV MDA     | 2120-1                | 515 (500-1)                       | 2120-1 <sup>3</sup> / <sub>8</sub>   | 515 (500-1 <sup>3</sup> / <sub>8</sub> ) |
| CIRCLING     | 2120-1<br>497 (500-1) | 2260-1<br>637 (700-1)             | 2260-1 <sup>3</sup> / <sub>4</sub><br>637 (700-1 <sup>3</sup> / <sub>4</sub> ) | 2280-2<br>657 (700-2)                    |